



City of North Port
Myakkahatchee Creek Greenway
Concept Plan

January 2007

TGW
Engineering

URS

Table of Contents



	Title	page
1	Introduction to Greenway	1-1
2	Existing Greenway Features	2-1 to 2-9
	Figure 2-1: Floodplains & Wetlands	<i>follows 2-3</i>
	Figure 2-2: Scrub Jay Habitat	<i>follows 2-6</i>
	Figure 2-3: Public Ownership	<i>follows 2-8</i>
	Figure 2-4: Existing Parks	<i>follows 2-8</i>
3	Greenway Planning Components	3-1 to 3-5
	Figure 3-1: Future Land Use	<i>follows 3-1</i>
	Figure 3-2: Photo Site Inventory	<i>follows 3-3</i>
	Figure 3-3: Surrounding Area Analysis	<i>follows 3-3</i>
	Figure 3-4: Trail Access & Connectivity	<i>follows 3-3</i>
4	Greenway Concept Options	4-1 to 4-6
	Figure 4-1: Option A	<i>follows 4-4</i>
	Figure 4-2: Option B	<i>follows 4-5</i>
	Figure 4-3: Option C	<i>follows 4-6</i>
A	Appendix	
	Acknowledgments	
	Public Workshop One: Survey Results, Sign-In, & Notes	
	Public Workshop One: Questionnaire	
	Janus Research Archaeological Memorandum	

I Introduction to Greenway

Greenway Basics and Purpose

Greenways are planned and established corridors providing connectivity to a community, parks, and recreational uses in conjunction with linear open space, nature and the environment. Florida has a defined 'Vision' through the Florida Greenways and Trails Act (Chapter 260 - Florida Statutes) of establishing a statewide system of Greenways and Trails. There is distinct recognition of the attributes, multiple benefits, and value these greenways provide to a community, the state, and nation.

Greenway Definition (Florida Statute 260)

"Greenway" means a linear open space established along either a natural corridor, such as a riverfront, stream valley, or ridgeline, or over land along a railroad right-of-way converted to recreational use, a canal, a scenic road, or other route; any natural or landscaped course for pedestrian or bicycle passage; an open space connector linking parks, nature reserves, cultural features, or historic sites with each other and populated areas; or a local strip or linear park designated as a parkway or greenbelt.

The City of North Port intends to plan, implement and establish a dedicated greenway corridor along the Myakkahatchee Creek located within the City limits.

This Concept Plan is a step in the direction of developing the roadmap for the City's goals for implementing a successful, natural Greenway through the middle of its urban development. Such a parkway will provide a multitude of benefits to the citizens of North Port including:

- 🌳 Preserve critical environmental lands and habitats,
- 🌳 Provide a linear parkway with numerous possible activities,
- 🌳 Protect the waterway's water quality,
- 🌳 Minimize encroachment into the creek's floodplain,
- 🌳 Create wildlife corridors, and
- 🌳 Provide education to the community.



2 Existing Greenway Features

Waterway Environment

The Myakkahatchee Creek (also known as Big Slough) drainage basin forms in Southeast Manatee County at the convergence of Bud Slough and Wild Cat Slough traversing Southwest through Sarasota County roughly 22 miles where it eventually flows into the Myakka River. Approximately 7 miles traverse through the City of North Port's incorporated limits (*SWFWMD Myakka River Comprehensive Watershed Plan 2004*). For purposes of planning the Greenway corridor, the Myakka River watershed and Big Slough drainage basin and associated waterway environment and ecosystem have been reviewed for functional influences.

Climate⁽¹⁾

The climate in the Myakkahatchee Creek planning area is subtropical with a mean temperature of about 78°F. The weather is influenced by latitude, low elevation, wind patterns, and proximity to the Gulf of Mexico and Charlotte Harbor. Average annual rainfall for North Port is 54 inches with approximately 60 percent falling during the summer months of June through September.

The summer rainfall patterns consist of short duration, intense convective thunderstorms occurring in the late afternoon. Rainfall in the winter months is generally associated with cold fronts moving across the region, and is characterized by low intensity, higher duration events.

The west coast of Florida has a high potential for tropical cyclonic storms, such as hurricanes. There is a return period of once every 5 years for hurricane force winds to occur within a 75 mile radius of any given location along the west coast. Hurricanes characteristically produce large amounts of coastal flooding due to storm surge and heavy rains.

Storm surges of up to 8-15 feet have been observed at west central Florida coastal communities (Tampa to Marco Island). However, the amount of rain associated with them varies. Generally, for purposes of

estimation, 10 to 12 inches is representative of a typical hurricane. A relatively dry, fast-moving storm may only bring 3 to 5 inches of rain, while a wet, slow-moving storm can bring up to 35 inches of rainfall.

Rainfall across a large basin, such as the Myakkahatchee, can vary greatly, especially during the season when the majority of rain events occur.

Watershed⁽¹⁾

The City of North Port is situated near the mouth of the Myakkahatchee Creek, which is tributary to the Myakka River and lies in the Myakka River Watershed. The incorporated land area of the city encompasses 55 square miles.



The predominant land use within the city limits is platted and partially cleared, but undeveloped, residential lots. 69,000 residential lots were originally platted by the General Development Corporation (GDC).

(1) Information obtained in part from *Big Slough Study – City of North Port (1994)*

A relatively small percentage of these lots are currently developed with growth in North Port expected to continue. There are over 800 miles of roads and 80 miles of canals originally constructed by GDC in support of their land development efforts.

Before development, the natural drainage pattern in the watershed consisted of intermittent flow between large wetland areas. The amount of storm runoff from the watershed has increased by the filling of depressions, clearing of vegetation, construction of the existing road system, and construction of residences.

The increase in runoff, combined with the network of drainage canals, has significantly increased the volume of flow and peak flow rates in the Myakkahatchee Creek during storm events.

Areas of the City have historically experienced severe flooding including evacuation routes during large storm events. Storms in 1988, 1992, 2001, and 2003 again produced substantial flooding in North Port.



Source: USGS Report FS-113-03
Flooding at Tropicaire Blvd. Area

Planning for Flood Control

It will be important through the Greenway master planning process to provide for integration of the Greenway and stormwater control where possible. The comprehensive stormwater modeling conducted in the mid-1990's and recently updated (2006) by the City are important planning tools to help incorporate necessary flood control features within the Greenway.

Results of the City's current stormwater modeling efforts will need incorporation into the Greenway master plan to depict critical drainage features and improvements.

The following possible solutions may be considered for handling stormwater along the Myakkahatchee Creek:

➤ Purchase of private, flooded lands

This solution would preclude flooding damage by preventing the development of the property allowing public ownership of critical flow-ways. Many have been acquired, yet key properties remain private.

➤ Storage of stormwater runoff

Construction of detention basins to detain flow from the agricultural areas north of the city to attenuate peak flow rates.

➤ Diversion of stormwater runoff

Flows could be diverted into the adjacent watershed to the west (Deer Prairie Slough), or a parallel channel along the waterway (*Big Slough Study – CDM 1994*).

➤ Increased conveyance capacity

Increase the conveyance capacity of the City's hydraulic system and reduce erosion and sedimentation in the creek.

Until the current stormwater modeling effort are completed by the City and specific recommendations are presented and accepted, the Greenway Plan will need to be flexible in order to incorporate future stormwater provisions.

Flood Plains

Flood plains basically refer to any land area susceptible to inundation by water from any source. Activities in floodplains are regulated at several different levels. Local governments control allowable land uses through comprehensive plans and land development regulations.

The Federal Emergency Management Agency (FEMA) administers the National Flood Insurance Program which works with communities through the Florida Department of Community Affairs to provide incentives for stricter development standards in flood-prone areas and provides hazard mitigation grants for post-disaster efforts. ⁽²⁾ The City participates in this program known as the Community Rating System (CRS). The City is considered a Class 7 community.

The emphasis for federal flood-related funds is shifting from structural flood controls to repetitive loss structures and redirecting development out of flood-prone areas. ⁽²⁾

Floodplain delineation for the purposes of the graphic depicted in *Figure 2-1* was derived from Federal Emergency Management Agency (FEMA) flood insurance rate maps (1981). As illustrated by the map, much of the area on both sides of Myakkahatchee Creek north of Price Boulevard is within the 100-year floodplain. Although a 100-year flood is a relatively rare event, this represents a one percent (1%) chance of flooding any given year.

Area within the 100-year floodplain and wetlands limits is generally poorly suited for commercial or residential development from both an environmental and health, safety, welfare standpoint.

As opposed to residential development, a more appropriate use is preservation or passive recreational uses, such as a Greenway. Development of a Greenway would lessen the overall impact to the Myakkahatchee Creek.

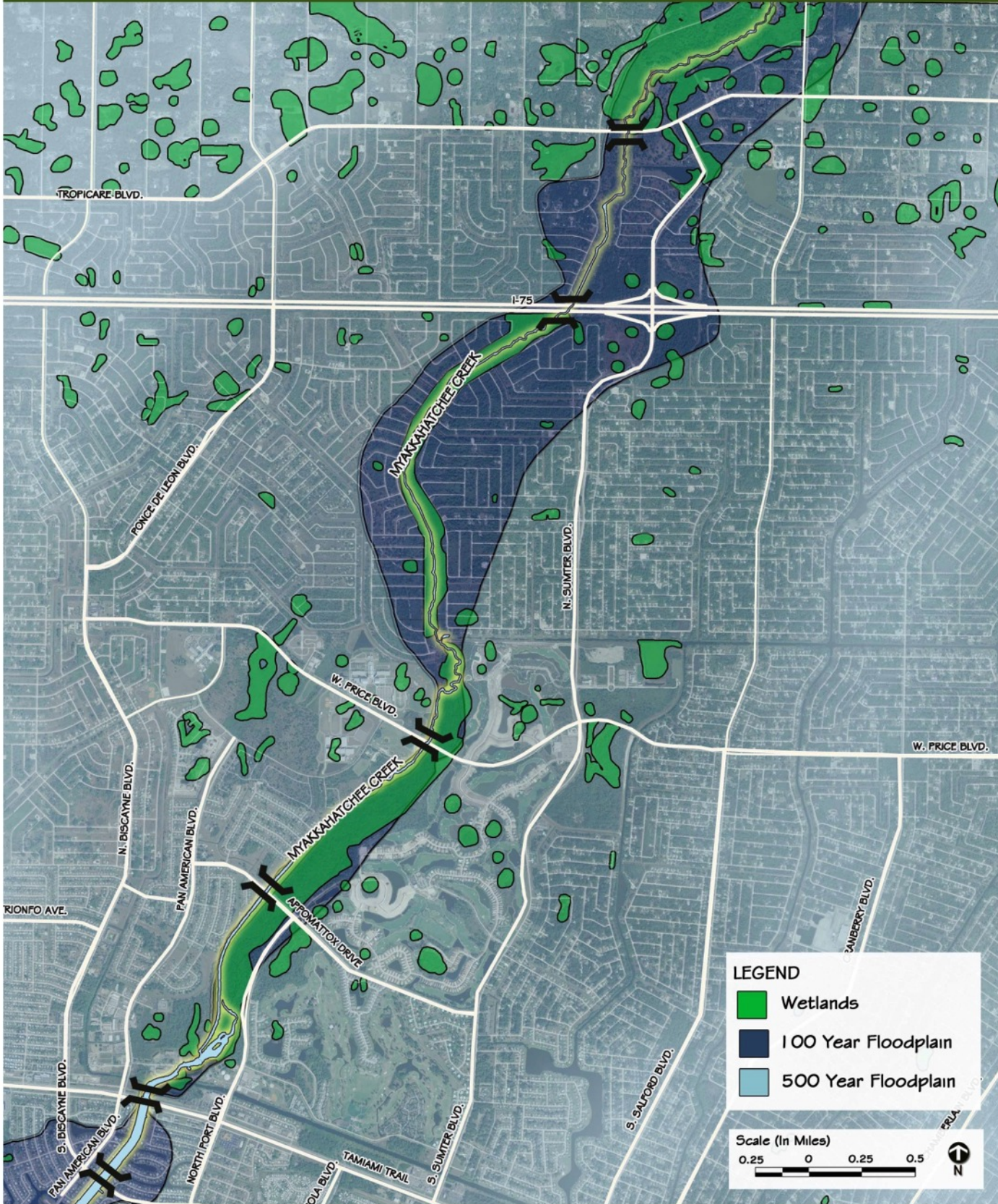
Wetlands

Wetlands, as defined by the *Federal Clean Water Act*, are “areas that are inundated or saturated by surface or ground water at a frequency and duration sufficient to support, and that under normal circumstances do support, a prevalence of vegetation typically adapted for life in saturated soil conditions. Wetlands generally include swamps, marshes, bogs, and similar areas.”

Florida wetlands generally include swamps, marshes, bayheads, bogs, cypress domes and strands, sloughs, wet prairies, riverine swamps and marshes, hydric seepage slopes, tidal marshes, mangrove swamps and other similar areas.”

Wetlands facilitate a number of invaluable functions including water quality improvement, floodwater storage, fish and wildlife habitat, and storage of floodwaters during wet periods. They are considered to be one of the most productive ecosystems in the world and can be used to educate residents and visitors when preserved in a recreational setting.

To determine specific locations of wetlands within the North Port project area, Florida Land Use, Cover and Forms Classification



Wetlands and Floodplains *Figure 2-1*

System (FLUCCS) data was used. As depicted in *Figure 2-1*, a ribbon of wetlands generally follows the creek with the exception of the area between I-75 and Tropicaire Boulevard.

A significant amount of wetlands exists between Price Boulevard and US-41 on the east side of the water and within the Myakkahatchee Creek Environmental Park.

Minimal to no impacts to wetlands will result from the development of passive uses within the greenway corridor.

To a large extent, wetlands within the Myakkahatchee Creek corridor contains forested subtropical hardwoods. A survey delineating existing jurisdictional wetlands will be required for the final design phase of the project.

Water Quality

It is important to maintain good water quality or improve a system's quality through best management practices and treatment systems. The concept plans for the Myakkahatchee Greenway include the goal of maintaining and enhancing the Creek's water quality. This is especially important since the City uses the Creek as a source of its drinking water supply.

At the southern City Limits, the Myakkahatchee Creek has been dammed and a small reservoir is maintained and protected by North Port for water supply.

Potable water is currently provided to the City of North Port by its water treatment plant (WTP) located adjacent to the

reservoir, just north of the U.S. Highway 41 crossing. The City operates the WTP on a continuous basis, except when creek flows are very low, during certain dry seasons. This facility utilizes a common softening process to treat the relatively clean water flowing through the waterway.



Source: City of North Port Website

During the low flow conditions, the City utilizes water from the Peace River through a pipeline interconnection with the Peace River/Manatee Water Supply Authority. The City delivers potable water to residential and business customers within the City on a 24/7 basis, and while meeting state and federal drinking water standards.

Through the 30 linear miles of stream and 140 square miles of watershed, the Myakkahatchee traverses agricultural, suburban and natural land uses. For future Greenway protection and success, the various land uses need to be compatible

for both resource conservation and for the public's enjoyment.

Based on prior and current water quality monitoring within the Myakkahatchee Creek,



Source: Engineering Visions, Inc. ©

the overall quality is considered to be “good” to “fair” when compared to other surface waters within the state. However, the results of a historic analysis indicate that pollution loadings in the watershed will increase considerably as future development occurs (*Big Slough Study – CDM 1994*).

As the loadings increase in the watershed, the water in the city’s canals could lower quality. Planning efforts and controls will be critical to keep the waterway from further adverse impacts with increased development.

Septic tanks, which will result in a substantial increase in Total Nitrogen (TN) loadings from future development, must be installed and maintained properly. The City is planning septic tank replacement with centralized wastewater conveyance and treatment systems in the more urbanized areas.

According to water quality monitoring results (*Charlotte Harbor National Estuary Program, 2001*), the Myakkahatchee Creek’s water is rated “fair” in comparison to other waterbodies throughout the state of Florida. It has a Water Quality Index (WQI) rating of 49 (where a score of 50 is the median of Florida Waters).

Greenway Planning needs to understand the importance of the stream flows and water quality relationships to water supply and greenway activities. Since the City depends upon this waterbody as a primary drinking water source, it is imperative to protect the watershed to minimize pollutants entering the stream.

The development of a Greenway Plan should have consistent goals

for watershed protection. Such protection includes:

- ✦ Maintaining natural systems within close proximity to the creek
- ✦ Limiting activities along and within the creek to those with little or no negative impact, in terms of pollutant loading
- ✦ Reducing the potential for untreated stormwater runoff from entering the stream
- ✦ Obtaining and conserving lands adjacent to or near the creek
- ✦ Planning land uses within the watershed to provide a natural balance with the developing urban area

Scrub Jay Habitat

The Florida Scrub Jay (*Aphelocoma coerulescens*) is a State and Federal threatened species that is found only in Florida. Florida Scrub Jays are protected by the United States Fish and Wildlife Service (FWS) and the Florida Fish and Wildlife Conservation Commission (FWC) under the Endangered Species Act and Chapter 39, Florida Administrative Code, respectively.

The Florida Scrub Jay has been listed as threatened by the state of Florida since 1975 and since 1987 by FWS. This protection makes it illegal to possess, harm, or harass the species.

The Florida Scrub Jay is gray and blue in color and relatively large in size (10-12 inches in



Source: Photo from Florida Fish & Wildlife (North Florida Field Office)

length). The Scrub Jay makes its home in, and is dependent upon the existence of, Florida scrub habitat.

Scrub is a unique habitat, which is composed of plants that are adapted to well-drained, sandy, nutrient poor soils. vegetation community composed of plants that are adapted to well-drained, sandy, nutrient poor soil.

Development pressures over the course of the past century have lead to a significant loss of scrub habitat for the birds. This type of habitat is particularly coveted by both citrus growers and developers alike. In fact, scrub habitat is now considered to be one of the rarest habitats in Florida.

Recently, the City of North Port and the U.S. Fish and Wildlife Service conducted a survey in order to identify occupied Scrub Jay habitat within the City limits. Survey information provided by the City of North Port (January 2007) was used as a basis for *Figure 2-2*. On the graphic, areas identified in red are parcels where the survey has identified occurrences of Scrub Jays.

These areas may require a Federal incidental take permit to clear lands or build. While the majority of these areas occur west of the project area that is generally proposed for inclusion in the Myakkahatchee Creek Greenway, a pocket of appropriate habitat for the birds does fall adjacent to the corridor. Given the rarity of the habitat and sensitivity of the bird species, development is not encouraged in areas occupied by Scrub Jays.

Therefore, passive uses are recommended for the portion of the greenway near the Scrub Jay habitat area.

Area Wildlife, Flora and Fauna

The Myakkahatchee Creek corridor is teeming with a wide variety of wildlife, flora and fauna. Specific species studies and identification were not conducted during this planning effort. Although detailed assessment was not conducted, there is an active and functioning ecosystem.

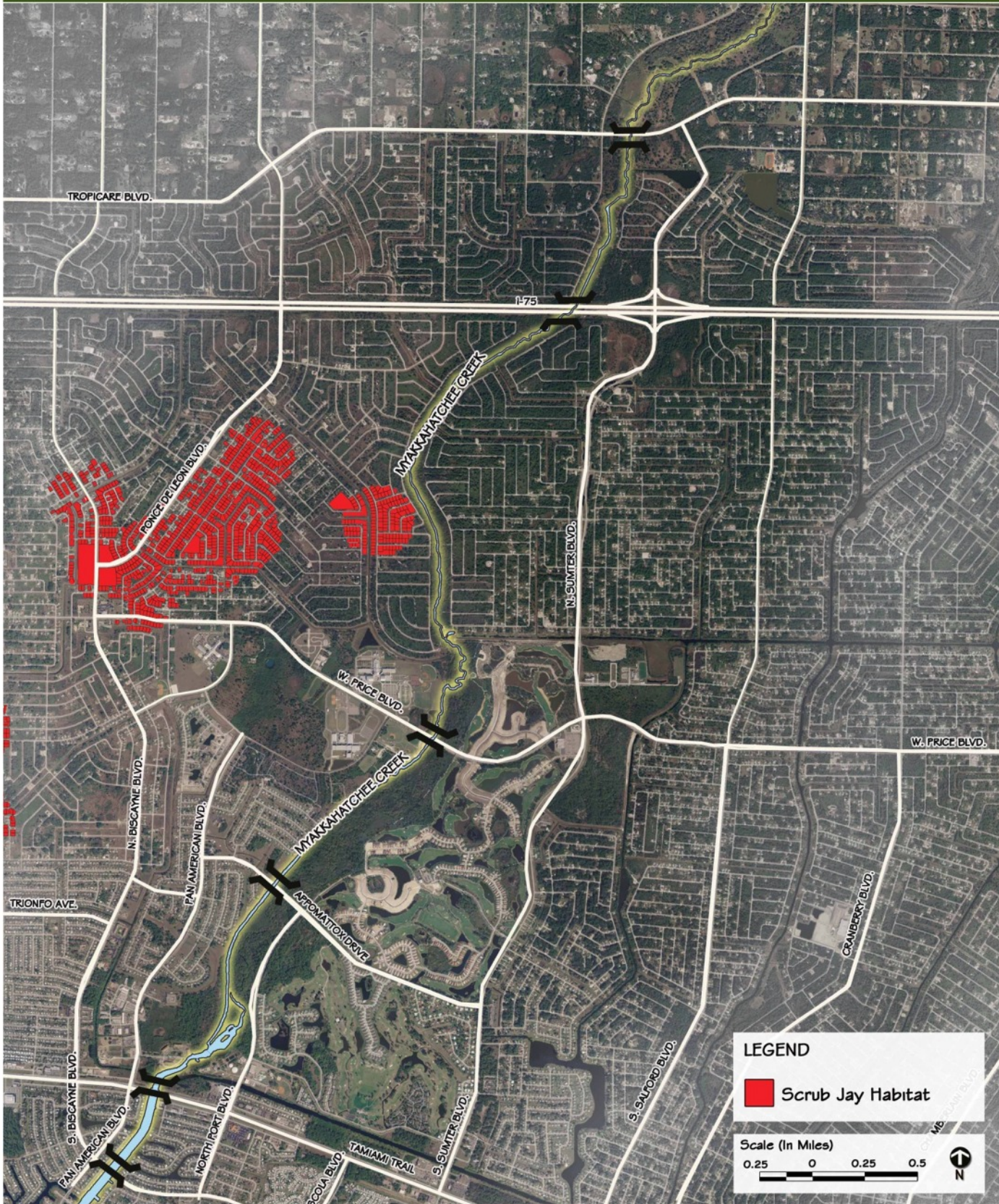
Highlights of the surrounding ecosystem are presented for reference:

*Gopher Tortoise (*Gopherus polyphemus*)*

Gopher Tortoise activity is known to occur in the elevated surrounding regions of Myakkahatchee Creek.



Source: Andrew Kelly
North Port Environmental Specialist



Scrub Jay Habitat

Figure 2-2

Osprey (*Pandion haliaetus*)

Osprey activity is abundant in North Port.



Source: Andrew Kelly
North Port Environmental Specialist

Alligator (*Alligator mississippiensis*)

Alligators are known to inhabit the Myakkahatchee Creek corridor.



Source: Andrew Kelly
North Port Environmental Specialist

Wild Coffee (*Psychotria nervosa*)

Grows along the banks of the Creek.



Source: Andrew Kelly
North Port Environmental Specialist

Red Shouldered Hawk (*Buteo lineatus*)

Hawks are seen hunting for food.



Source: Andrew Kelly
North Port Environmental Specialist

Anhinga (*Anhinga*)

Anhingas are active along the Myakkahatchee.



Source: Andrew Kelly
North Port Environmental Specialist

Roseate Spoonbill (*Ajaia ajaja*)

Immature spoonbill feeding in a swale.



Source: Andrew Kelly
North Port Environmental Specialist

Waterway Lands and Surrounding Uses

Property Ownership

“Land – they ain’t making it any more.”

- *Will Rogers*

Securing the lands necessary for Greenways is typically the most difficult task in the entire process. The City’s Comprehensive Plan placed emphasis on the acquisition of the first two tiers of platted lots on each side of the Creek to aid in the facilitation of the Greenway concept. In addition, a number of Tier Two lots and several adjacent parks are within the public domain.

This provides a tremendous head start for the implementation of the Myakkahatchee Greenway. The City is actively engaged in additional property acquisitions along the creek corridor to help effectuate the connectivity of lands for the public’s use and environmental protection.

Other property protection options include environmental easements and land use/development conditions. To the north of the City, a significant conservation and preservation easement has been granted to the state (Southwest Florida Water Management District) along several miles of the Myakkahatchee Creek.

This easement provides added opportunity for protecting the waterway and potentially lengthening the greenway to the north for the public’s passive recreational use.

As depicted in *Figure 2-3*, significant tracts of land adjacent to the creek are currently in public ownership. Largely, these are owned by the City of North Port and North Port Road and Drainage District. The City has identified a tiered acquisition process for

floodplain protection adjacent to the Myakkahatchee Creek.

Other landowners include the following: Sarasota County, the School Board, Sarasota Preservation Society, and North Port Fire and Rescue District. Existing parkland such as the Myakkahatchee Creek Environmental Park is included within this land classification type.

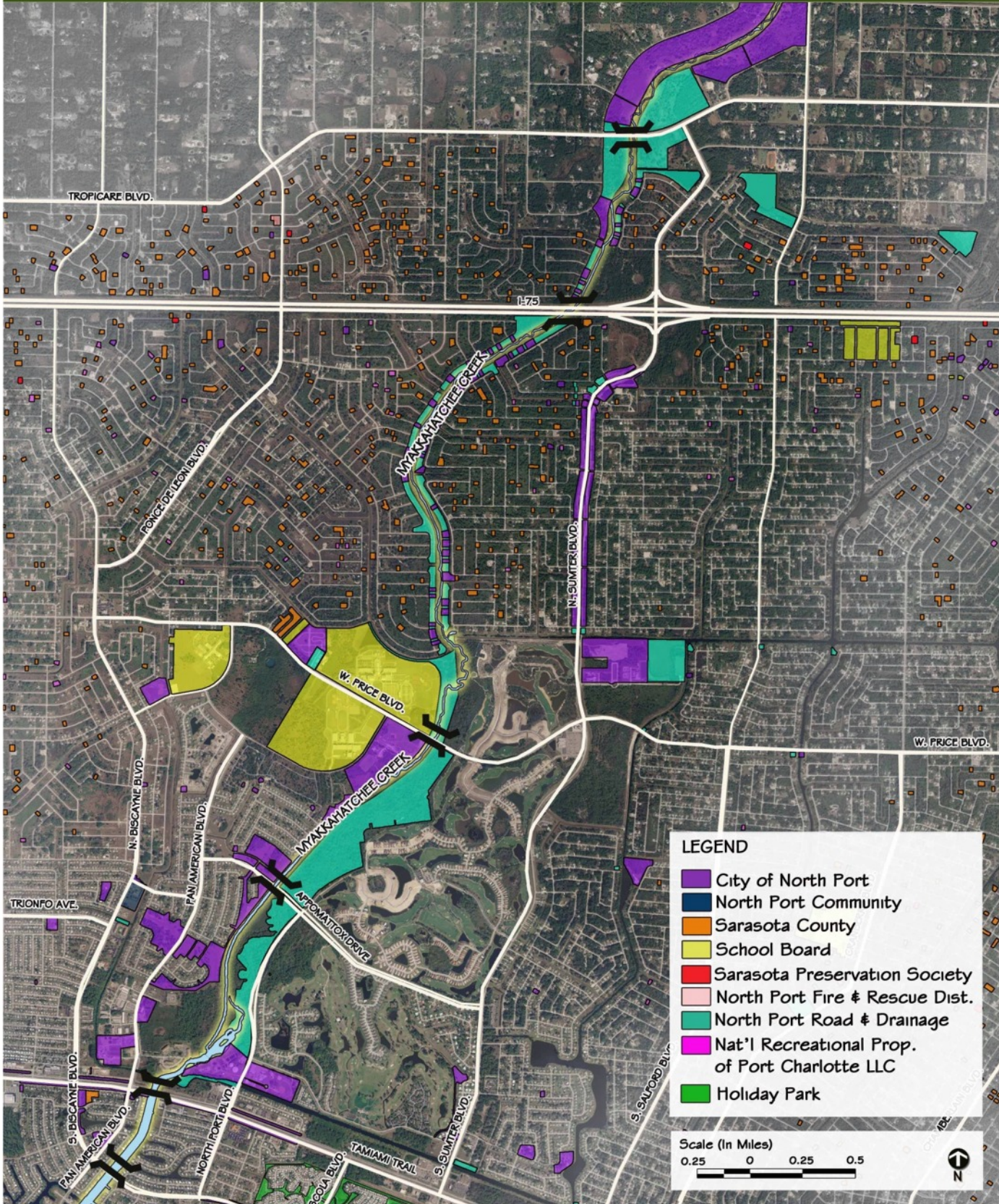
As part of the master planning process, strategic parcels for acquisition should be identified or ranked for the purchase of properties necessary for the development of the greenway.

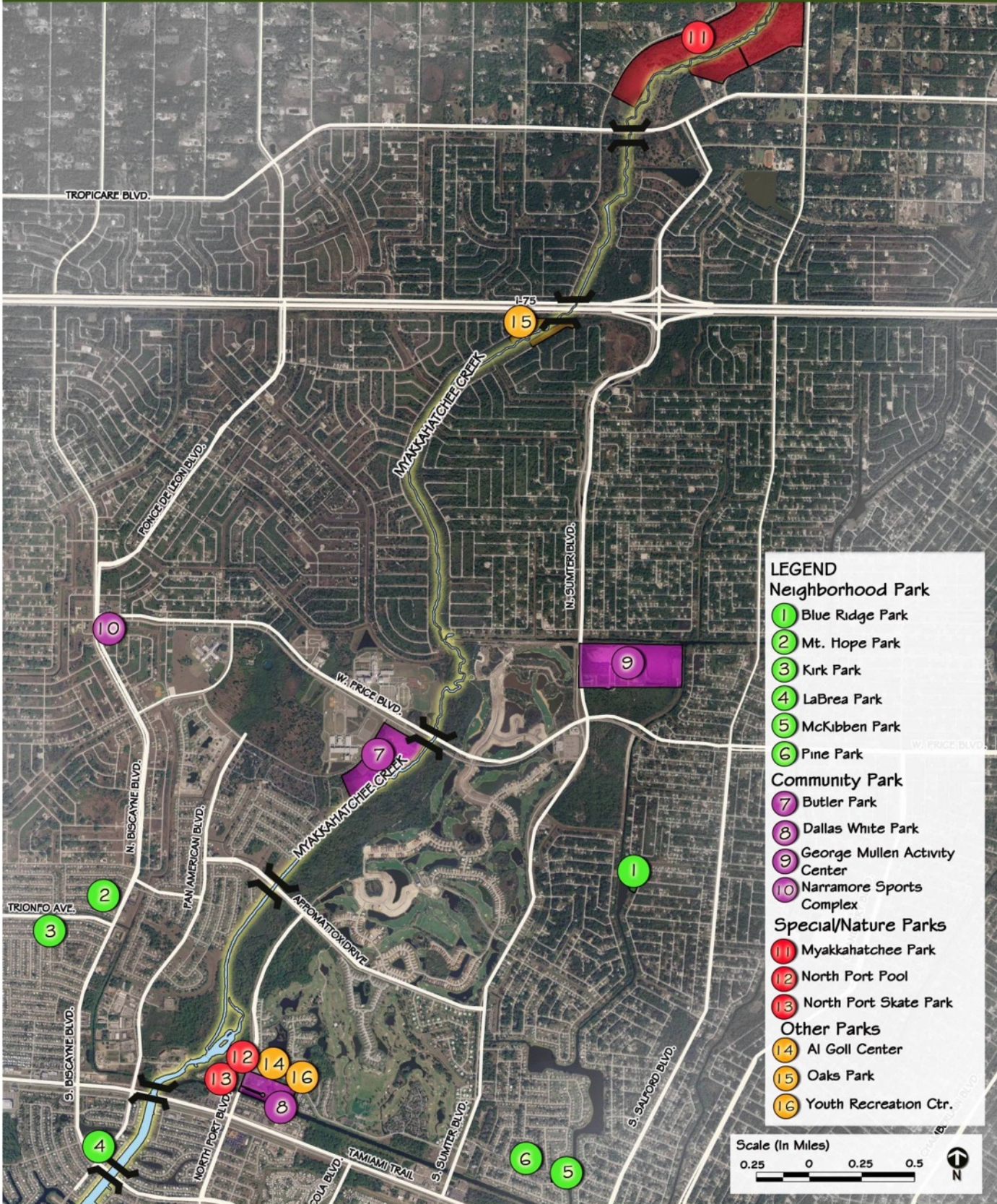
Existing Parks

The Myakkahatchee Creek Greenway is envisioned as a linear park that will serve to connect existing and future recreational, natural and/or cultural resources of the area.

With a variety of recreational facilities and adjacent parks as depicted in *Figure 2-4*, including six neighborhood parks, four community parks, three special/nature parks, and three other parks, there is ample opportunity for the establishment of this type of connectivity. Parks vary in terms of programming and scale; however in general, park facilities are smaller with an active recreation focus towards the southern end of the proposed greenway.

On the north end of the proposed greenway is the Myakkahatchee Creek Environmental Park, which includes approximately 160 acres, making it the largest park in the immediate vicinity. Owned by the City of North Port, the park has been operated by Sarasota County through an interlocal agreement adopted in 1993.





Existing Parks

Figure 2-4

Amenities such as canoeing, hiking, and picnicking are available. In the future, group camping, nature trails, picnic shelters and restrooms are planned for the park. Given its location and associated facilities, this park is proposed to serve as the primary greenway trailhead.

South of where I -75 crosses the Myakkahatchee Creek is Oaks Park, another one of the City parks operated by Sarasota County. Parking and a canoe launch are provided at this park location. Despite its proximity to the highway, this park is challenging to locate by vehicle.

Additional wayfinding from the Sumter Boulevard and local streets should be considered. Expansion of associated park facilities could also be planned to enhance this potentially important hub of the proposed greenway. South of West Price Boulevard is Butler Park, which encompasses more than 40 acres of land, and included in those parks owned by the City and operated by Sarasota County.

Amenities include the following: a canoe launch, concession area, a large pavilion and picnicking area, two little league fields, a major-little league field, a playground, and two soccer fields available for public use. It abuts a large amount of school property and single-family residential land use. Because of its ties to complimentary land uses, this park and its facilities are an important tie-in the proposed greenway.

Moving further south, north of US-41 and west of North Port Boulevard is Dallas White Park and the Al Goll Recreation Center. Dallas White Park is a City owned and county operated facility with more than 17 acres of parkland and an aquatic complex.

It also includes a softball field, picnic shelter, playgrounds, volleyball courts, and tennis

court. Also in the area (east of US-41 on North Port Boulevard) is the North Port Skate Park, which features a street course and skate bowl.

Maximizing connectivity over time to these existing parks from the Creek corridor will enhance the Greenway functions.

Archaeological Review

Janus Research conducted a reconnaissance survey of the planning Creek corridor in October 2005. They also conducted an archaeological literature search through the Florida Master Site Files. Information collected from the literature search revealed six existing and recorded archaeological sites in close proximity to the corridor. Based on the site visit and the existing environment of surrounding soils and wetlands, their opinion is the potential existence of unrecorded archaeological resources within portion is of the planning corridor. Their corresponding memorandum is included in the *Appendix*.

It will be necessary to conduct further information development in regards to archaeological features and significance during the master planning process.



Source: Andrew Kelly
North Port Environmental Specialist

3 Greenway Planning Components

Planning Features

Planning the Myakkahatchee Creek Greenway involves the incorporation and balancing of a variety of important factors. Components such as land ownership, public interest and community support, ecological and biological factors, and economics all play critical roles in successful planning.

Greenways Based on Careful Planning (Florida Office of Greenways and Trails)

"Connections should be based on detailed assessments of potential sites and surrounding features as well as current resource conservation and/or recreational principles. The design and location of future landscape linkages and conservation greenways must be justified based on valid ecological assessments and the principles of conservation biology and landscape ecology. Greenways must be planned and designed to maximize land use compatibility in order to conserve biodiversity and maintain ecosystem integrity while minimizing negative impacts to private lands."

For purposes of planning the Greenway corridor, the listed major components were reviewed and compiled for the development of three concept options for the City and the public to consider for future master planning of the Myakkahatchee Creek Greenway.

Planning Components

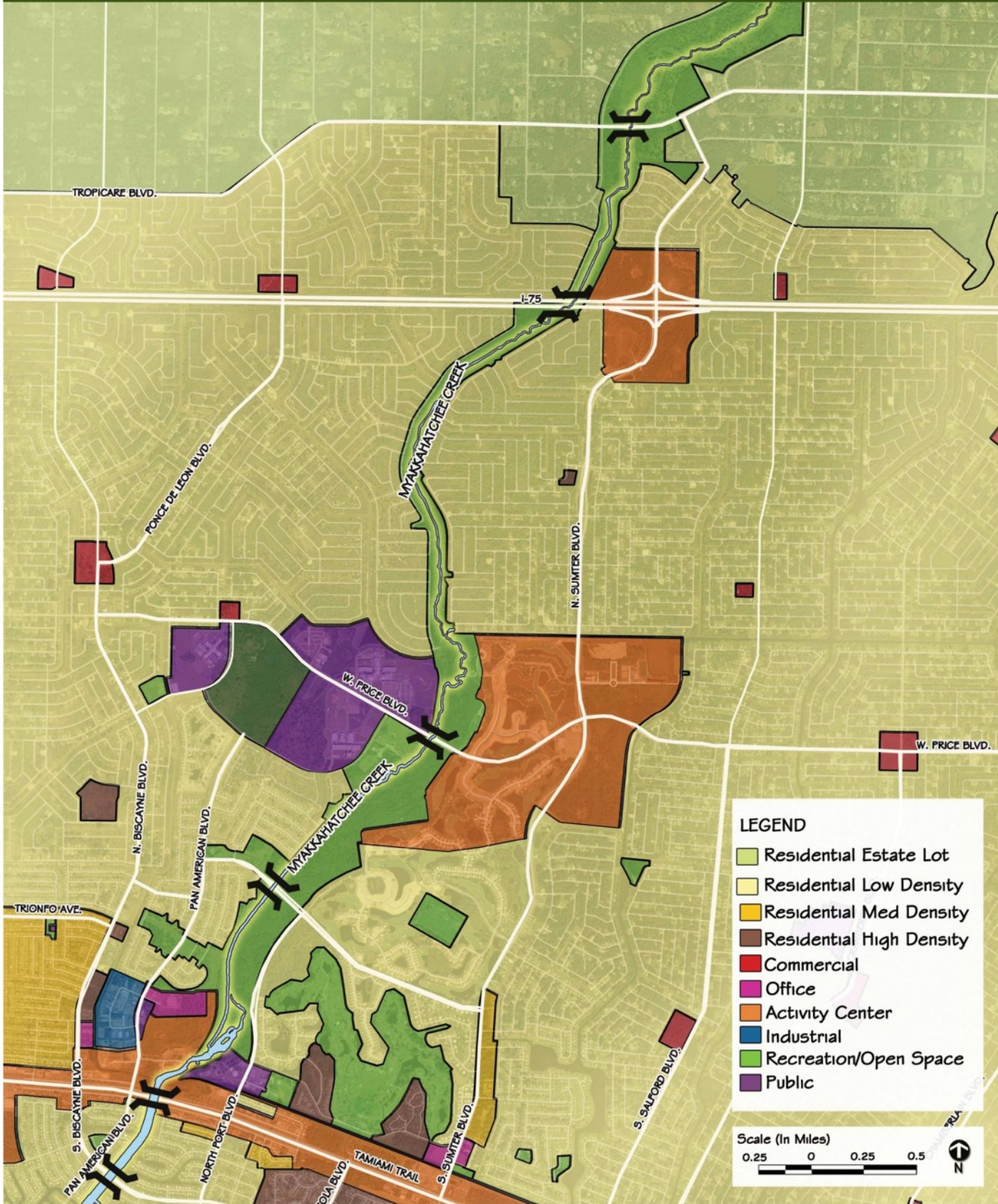
- ✿ Existing Features (Section 2)
 - Wetlands & Flood Plains
 - Water Quality
 - Scrub Jay Habitat
 - Public Land Ownership
 - Existing Parks
- ✿ Future Land Use
- ✿ Site Inventory & Analysis
- ✿ Surrounding Area Analysis
- ✿ Trail Access & Connectivity
- ✿ Public Input
- ✿ Existing Reference Information
 - Needs Assessment
 - Park & Recreation Master Plan
- ✿ Concept Options (Section 4)

Future Land Use

Planned future land use provides a framework for the City continuing managed development of the community. *Figure 3-1* was derived from data provided by the City of North Port. The categories and location of land type are contained within the City's GIS (Geographic Information Systems) dataset library. Future land use is an important element of both the City and County's Comprehensive Plan.

The future land use plan is meant to provide direction for managing anticipated growth and ensuring the distribution of land uses that will meet the future economic, social, physical and environmental needs of the municipality.

As the *Figure 3-1* illustrates, many of the lands classified under public ownership are



Future Land Use

Figure 3-1

identified as recreation/open space. This gives additional weight to the proposition of creating a greenway in this location. The limits of the recreation/open space also help to define potential greenway extents.

A continuous recreation corridor is shown following the length of the Myakkahatchee Creek linking existing recreational uses like the Myakkahatchee Creek Environmental Park, Oaks Park, and Butler Park.

Areas adjacent to the greenway are shown as remaining low density residential in the future. The northern end of the proposed greenway, near Myakkahatchee Creek Environmental Park, is proposed to remain the lowest density of use with residential estate lots.

At the southern end of the proposed greenway near US-41 are the most intense uses, including commercial and high density residential land use designations.

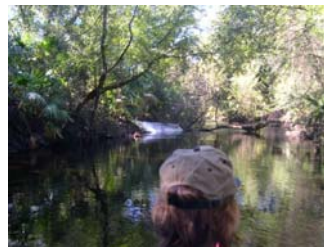
The proposed greenway is compatible with the planned future land uses as identified in the City Comprehensive Plan, and can serve to provide connectivity from the residential areas to the greenway and pedestrian access to parks located adjacent to the corridor.

Site Inventory & Analysis

Throughout the conceptual planning process, multiple trips were made to the Myakkahatchee Creek and adjacent properties. The first trip was conducted

during high water season utilizing kayaks down the creek.

This was primarily undertaken to determine whether the creek was navigable in its current state and the potential for canoe and kayak travel and designation as a *blueway*. Overall, the creek had a pleasant existing canopy over the water, making travel physically comfortable.



Views were scenic, however, low-hanging branches from overhead trees, a lack of signage, as well as vegetational debris within the waterway made navigation by kayak challenging - but not impossible. A designated, well-marked canoe/kayak *blueway* would be a positive amenity to the North Port area.

A *blueway* would present an opportunity to introduce the greenway to a larger audience, to view the area from a unique vantage point, and to make the greenway more attractive to users in the hot summer months.

This type of travel can be aided by an aggressive creek maintenance plan. Way-finding signs and designated pull-out areas would be incorporated as part of canoe & kayak trail *blueway* design.

An existing pedestrian trail was discovered and followed on foot. The trail, although rough and unimproved in most areas, was continuous along the creek and easy to

follow. Means for getting around multiple road crossings were examined. In addition, linkages to compatible uses were studied.



Evidence of current area use in various forms, such as fully constructed bike platforms for BMX type activities, were noted. Debris and trash were significant past the Snover Canal.

Representative photos of the corridor were compiled and placed on an aerial depicted in *Figure 3-2* in order to create a graphic that illustrates overall existing conditions along the corridor. Locations of the representative photos were taken is noted by numbers on the aerial photo corresponding to their place along the greenway.

Surrounding Area Analysis

Following the inventory of the potential greenway, the information was synthesized to get a better and more holistic understanding of opportunities and constraints within the area along the Myakkahatchee Creek. Scrub Jay habitat, 100-year floodplain, parks/open space, schools and library locations were superimposed on future land use information maps.

Locations of particularly noteworthy views were noted during field visits. Possible neighborhood connections were suggested within areas of higher residential densities. Area for the potential greenway was then mapped based on inventory of physical site factors.

The greenway extents are to be further refined taking into account site-specific variables, such as condition and location of existing trails and type of activities that are to be proposed along the greenway. As illustrated in *Figure 3-3*, there is excellent neighborhood accessibility and opportunities for linkages to compatible uses.

Trail Access & Connectivity

Following examination of potential parcels to include in the corridor, trail access and connectivity were studied. The purpose of this study was to obtain an understanding of where existing access points existed and determine the level of existing connectivity of the greenway corridor. As observed by field visits in October 2005 and February 2006, parks directly adjacent to the creek had vehicular parking associated with access to the corridor. These locations are shown in blue on *Figure 3-4*.

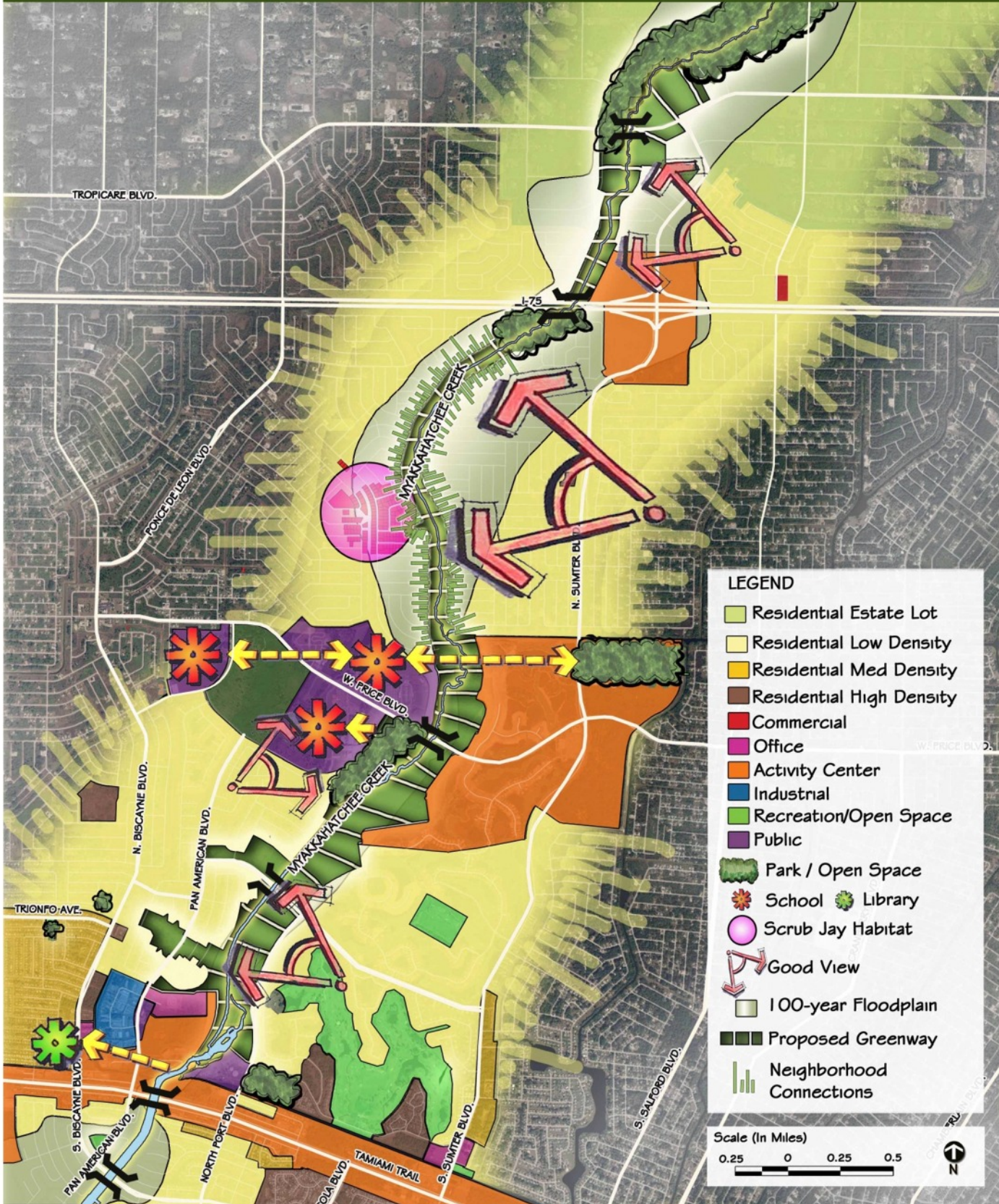
Potential trail access points, indicated in red on *Figure 3-4*, are locations where there was evidence of individuals trying to connect to an existing rough path adjacent to the creek. Most access points were marked by piles of debris and had well-worn paths which served as linkages.

Five and ten minute walks were then added to the graphic to demonstrate existing connectivity. A five minute walk is approximately 1000 feet, given the sandy terrain and condition of existing trail.

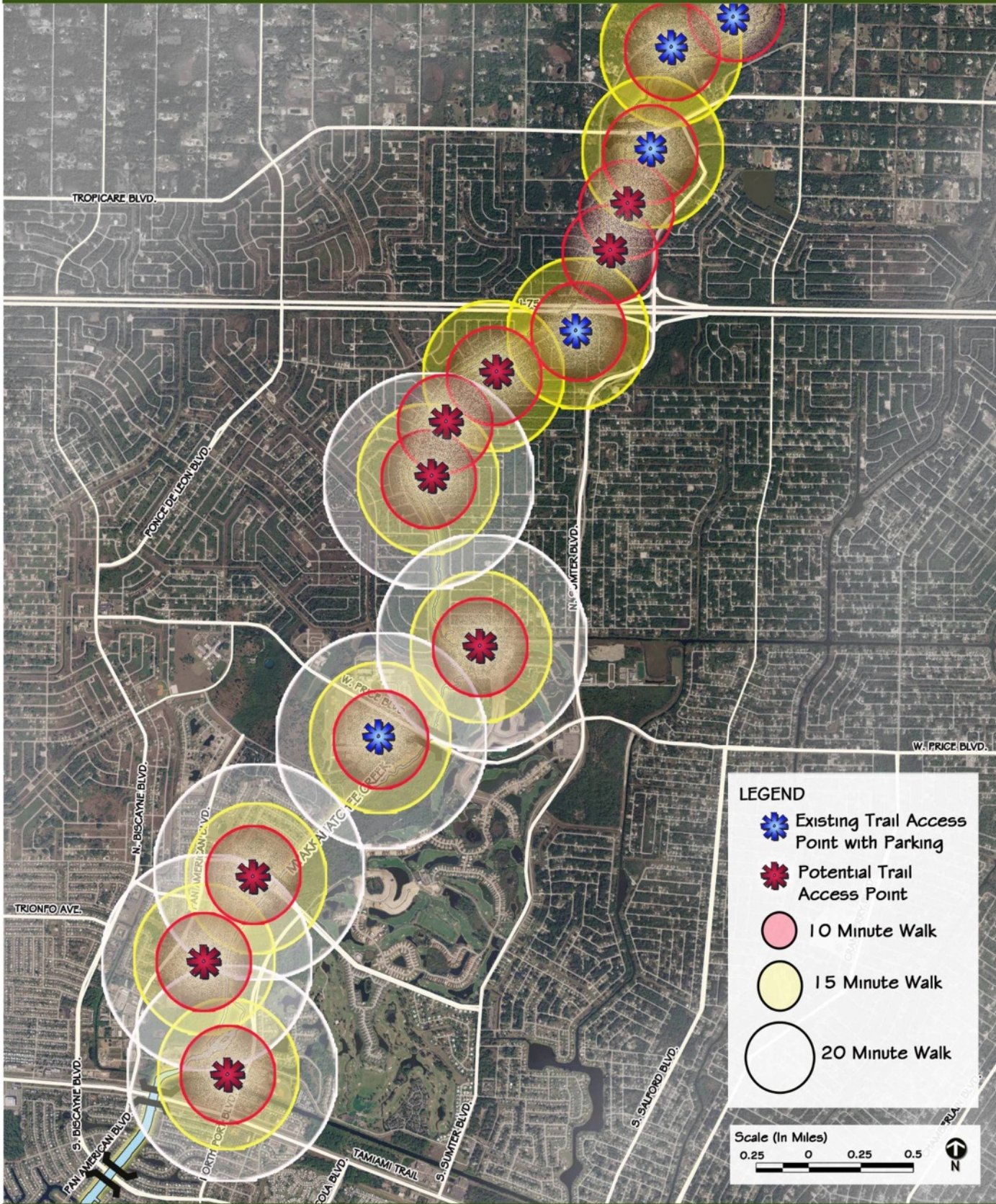


Photo Site Inventory

Figure 3-2



Surrounding Area Analysis Figure 3-3



Trail Access and Connectivity Figure 3-4

Although connectivity proved to be satisfactory overall, as demonstrated by *Figure 3-4*, some parts of the trail fell outside of a five or ten minute walk. In the future, additional access points and parking will be necessary to accommodate users.

Public Input & Survey Results

The creation of a Greenway serves a foundational purpose of providing a dedicated environment of nature for the community. It serves as a diverse, natural background for the community, its residents and public to interact.



A Greenway system strives to encompass a broad variety of landscape types and functions where the overall intent of the Greenway is to protect and enhance natural, cultural, scenic, and water resources, while providing recreational benefits to the community. Gathering input from the community provides an important information resource in the development of the Myakkahatchee Creek Greenway Concept Plan.



North Port, to receive input regarding the

planning of the Myakkahatchee Creek Greenway project.



There were approximately 37 people in attendance not including various City and TGW/URS staff. Surveys were distributed to the attendants during the meeting.

Persons could either complete the surveys before they left the meeting or later by transmitting the completed forms by mail or Fax. By the end of the meeting, 17 completed surveys were received.

The North Port Sun Herald newspaper further published the survey on April 21st, 28th, and 29th, 2006. An additional 42 surveys were received after the April 18th meeting through the month of May. This service aided further in gathering public input and interest regarding the Myakkahatchee Creek Greenway project.

A total of 59 surveys were collected from the public input meeting and mailed surveys from interested parties regarding the Myakkahatchee Creek Greenway project.

The survey responses reflect the desires of the individuals as to activities, opinions, and concerns they may have regarding the Greenway project. The detailed survey questionnaire and resulting information data are included in the *Appendix*.

Comments of the first Public Workshop

"Would like to see open space activities."

"Would like to see other Environmental Park access."

"Look to protect the greenway and water resources."

"There needs to be a variety of elements in the Park."

"Attention needs be given to safety and security."

"Connection to the Carlton Preserve would be Great."

The results of the survey indicated strong and consistent desires for the following Greenway attributes:

- ✿ *Walking and Hiking Trails*
- ✿ *Nature Trails*
- ✿ *Natural Scenic Areas*
- ✿ *Picnic Area and Facilities*
- ✿ *Handicapped Activity Area*

There was also expressed interest in the following activities:

- ✿ *Canoe and Kayak Access*
- ✿ *Fitness and Exercise Trail*
- ✿ *Pet Walking Trail and Area*
- ✿ *Bicycle Trail*
- ✿ *Primitive Camping Area*

Also listed of interest, but in a much smaller group of respondents, were the following activities:

- ✿ *Fishing Area*
- ✿ *Swimming Area*
- ✿ *Equestrian (Horse) Trail*
- ✿ *BMX Bike Trail*
- ✿ *Rollerblading and Skating*

Level of interest does not necessarily preclude an activity from being established within the Greenway project. The feedback preferences aid in establishing the priority, timing, and level of dedicated area set aside for particular functions. This input is factored into the overall conceptual planning.

Highlights of individual written feedback also provide insightful information regarding the desires as well as concerns of the community.

Comments for Additional Activities:

"Guided walks, small concession stand, small nature center plus lectures/programs."

"Environmental education - canopy platform."

"Signage in nature trail and at scenic areas describing the 'flora and fauna'."

"Hiking/bicycle trail through Carlton Reserve to Myakka River."

"Showers and toilets in the environmental park."

"ADA accessible trails (wheelchairs & scooters)."

"Restrooms, showers for camping area, pavilion, youth camping fire circle."

"Place for families & kids to go. Keep kids off streets and out of trouble."

"Would like to see a playground."



Other Ideas or Comments:

"A playground would be nice so families could do trails, play at playground then picnic."

"We do need a lot of things for US baby boomers!"

"A children's park, water and wild life - scenic areas."

"Thank you for requesting our feedback! Look forward to a nice place to enjoy with our family and friends"

"How come there seems to be plenty of money for extras like this but not for necessities? It's very disturbing. I wonder WHO benefits the most from these suggestions?"

"Camping and swimming are 'noisier' type activities which could take away from the peaceful atmosphere and disturb the wildlife more."

"Security to protect the greenway. Our major concern at this time is a lack of routine police patrols in Myakkahatchee Park to curtail reckless public intoxication and irresponsible behavior that can start a serious fire."

"We are beyond due to have a pet area for North Port!"

"Security is a main importance."

"Boat tours, boardwalks (land dependent), Florida friendly garden area, playground, benches along trail."

4 Concept Plan Options

Greenway Options A, B, & C

Providing options for consideration gives an opportunity for the City and community to visualize and interact with the development of their greenway. Development of the Myakkahatchee Creek Greenway options were based on the planning features presented in Section 3.

The Myakkahatchee Creek offers tremendous opportunity for the citizens of North Port to select a signature Greenway to match their lifestyle and interests, and to protect important environmental features of this region of Florida.

Developing the initial ideas and concepts for the Greenway is a collaborative effort among interested parties and sometimes divergent interests to plan the future of a great part of the City for generations to come. Choosing a concept plan which is based upon public interaction and interest will lead to a successful master plan to forge this Greenway.

The options are presented as Option A, Option B, and Option C. The compiled options progress from limited passive functions to maximum passive activities with some active functions. The ultimate option selected may match one of these three possible options or a mixture and combination of options.

Concept Options

Trail Alignment

In all possible options, the formation of a corridor connecting north and south project boundaries is recommended. On the north end of the trail, a link should be planned connecting the proposed greenway to the Carlton Reserve, an existing area resource with over 80 miles of primitive trails.

Unimproved trails for pedestrians should, in general, be allowed a smaller setback to the Myakkahatchee Creek than trails intended for higher intensity use and/or pavement improvements.



If a path is intended strictly for pedestrian use, signs should be placed at trailheads and periodically along the trail informing

users that any other use of the trail is prohibited.

Environmental education can be provided the length of the corridor in the form of tree/foliage/wildlife/cultural identifiers approximately 100 feet on center.



General circulation patterns are illustrated in the conceptual options plans. Existing trail alignments should be utilized where feasible. In addition, actual trail alignment should seek to avoid extreme changes in topography, the need for removal of shade trees, and environmentally sensitive areas in general. Where possible, trails should be located utilizing existing tree canopy. Parking facility, rest areas, and activity nodes are recommended where indicated on each of the proposed options.

Trail Segment

Trail segments, with recommended looping of each individual segment, provide a shorter alternative to walking the length of the entire greenway. Although a continuous corridor is planned for, trail looping should also be incorporated to allow for abbreviated walks for time and energy considerations.

Along each segment a variety of experiences should be provided to engage users, for example, one portion of the segment may follow close to the Creek, while another diverts further upland.

For the comfort of users, provide signage at trailheads with maps showing approximate trail alignments, length and time to complete, as well as estimated difficulty level.



Similar Needs and Considerations

Whichever option is chosen by the public, there will be a central theme/focus and many similarities and criteria for the eventual implementation of the full-fledged Greenway. The central theme will be to provide a natural environment for enjoyment, education, meditation and protection.

Some of the more important, similar needs of the future park to consider are:

- ❑ Water quality protection of the City's drinking water supply. The Myakkahatchee Creek serves as a primary source of drinking water and must be protected from possible watershed pollution and degradation.

- ❑ Stormwater conveyance for flood protection. Past events have demonstrated the severe nature of flooding in this watershed.

Future improvements for stormwater management within the future footprint of the Greenway will need to be integrated into a functional system that will still provide for the public's use and interests while minimizing future flooding.

- ❑ Safety for those who use the park. With miles of forested trails and numerous outdoor activities, it is critical for the Greenway to be actively patrolled for the protection of all users.

Strong public input was received in both the public workshop and written surveys regarding current issues and concerns with safety primarily in the Environmental Park area. Similar concerns were expressed for the Greenway corridor.



- ❑ Crossing connections are important in providing optimum access and movement through the Greenway. This will have special focus at Hole 5 of the golf course which sits on the edge of the Myakkahatchee Creek banks.
- ❑ BMX and skate boarding activities have not been planned into the Greenway project. There is interest in these activities and consideration should be given by the City in providing better suited areas somewhere to fulfill these interests. The Greenway project does not lend itself to these activities.












Features

Each option depicts varying elements of the activities of the Greenway. Specific features such as picnic tables, bicycle racks, crossing structures, boardwalks, etc. will be developed during the master planning process.












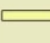






Legend graphics depict functions from a concept location and activity basis. Descriptions are summarized for reference.

-  Denotes locations of the existing parks within the City of North Port.
-  Denotes boundaries of school property which offers a primary connectivity area to the Greenway.
-  Denotes Watershed protection area in the immediate area of the City's reservoir and water treatment plant. Area extends from Appomattox Drive to US 41 in all Options.
-  Denotes existing dedicated bicycle paths on roadways.
-  Denotes proposed locations of Handicapped areas with design features for special needs including co-located picnic facilities.

-  Denotes Canoe & Kayak access points.
-  Denotes proposed vicinity location of Nature & Hiking trails. This activity will extend from Environmental Park to Appomattox Drive.
-  Denotes primary neighborhood connection points for access.
-  Denotes a comparable use connection to areas with similar recreational focus.
-  Denotes proposed Paw Park in West Price Blvd. vicinity.
-  Denotes a dedicated fitness trail designed with exercise stations and distance markers.
-  Denotes horse trail location. Equestrian activity is focused to the North.
-  Denotes a dedicated Bicycle trail.
-  Denotes area for primitive camping with expansion of existing facilities.
-  Denotes fishing spot.
-  Denotes swimming area.

Legend

-  Existing Park
-  School Property
-  Watershed Protection Area
-  Existing Bikeway
-  Handicapped Access Point & Areas w/ Picnic Tables
-  Canoe & Kayak Access Points
-  Nature/ Hiking Trail
-  Neighborhood Connectivity
-  Compatible Use Connection
-  Fenced Paw Park
-  Looped Fitness Trail
-  Horse Trail
-  Bicycle Trail
-  Primitive Camping Area
-  Fishing Area
-  Swimming Area



Option A

Boundary: Environmental Park to Appomattox Drive

Objective: Maximum protection the waterway while allowing only passive activities.

Features:

- Pedestrian Path access through neighborhoods.
- No public access signs posted after Appomattox
- Proposed activities will be:
 - Nature Trail
 - Walking and Hiking Trail
 - Handicapped Access Point areas
 - Natural Scenic areas
 - Canoe and Kayak Access Points (near Environmental Park and upper reaches of creek)
 - Picnic Tables (Single Use)

added preservation of natural lands and habitats.

In terms of implementation, Option A will be the lower cost alternative due to the minimal facilities and reduce levels of function.



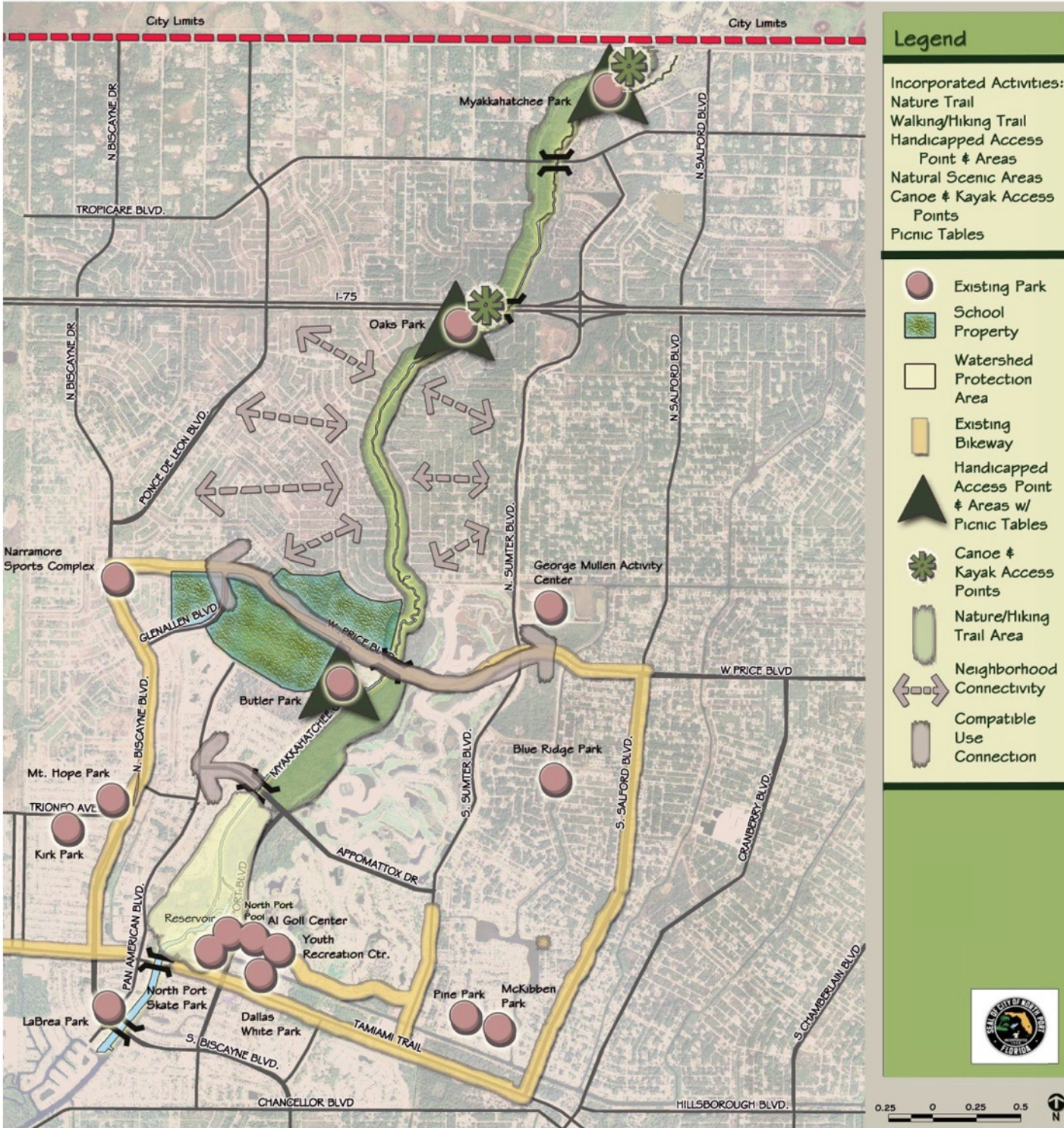
Source: Andrew Kelly
North Port Environmental Specialist

Option A, as portrayed in *Figure 4-1*, will provide a Greenway with the maximum green.

Although it will not limit access or certain conveniences, it will provide a limited number of activities; those activities being passive, low impact to the surrounding natural environment.

Option A will also provide the maximum protection to City's water supply by the passive nature of the activities and the

Myakkahatchee Creek: Greenway Concept Plan A



Option A

Figure 4-1

Option B

Boundary: Environmental Park to Appomattox

Objective: Protection of the waterway while allowing expanded passive activities.

Features:

- Pedestrian Path access through neighborhoods.
- Trail Head Parking
- No public access signs posted after Appomattox
- Proposed activities will be:
 - Nature Trail
 - Walking and Hiking Trail
 - Handicapped Access Points and areas
 - Natural Scenic areas
 - Canoe and Kayak Access Points (near Environmental Park and upper reaches)
 - Picnic Tables (Single and multi-family and group use) and expanded Picnic facilities.
 - Fenced Paw Park area located at the Ball field area at West Price Blvd.
 - Dedicated Fitness and exercise trail with a loop and associated marked Distance.

These additional features will provide more variation for residents to utilize an increased number of activities; those activities still being primarily passive in nature.

This option will be marginally more costly than Option A to accommodate added capital costs for parkway components such as fitness trail, paw park, and such features.



Source: Andrew Kelly
North Port Environmental Specialist

Option B, presented in *Figure 4-2*, will provide a Greenway with added passive features to those presented in Option A.

Myakkahatchee Creek: Greenway Concept Plan B



Option B

Figure 4-2

Option C

Boundary: Environmental Park to Beginning of City Reservoir with loop back.

Objective: Protection of the waterway while allowing expanded passive and active functions.

Features:

- Pedestrian Path access through neighborhoods.
- Trail Head Parking
- No public access signs posted after loop back at start of Reservoir.
- Proposed activities will be:
 - Nature Trail
 - Walking and Hiking Trail
 - Handicapped Access Points and areas
 - Natural Scenic areas
 - Canoe and Kayak Access Points (up near Environmental Park and upper reaches)
 - Picnic Tables (Single and multi-family and group use) and expanded Picnic facilities.
 - Fenced Paw Park area located at the Ball field area at West Price Blvd.
 - Dedicated Fitness and exercise trail with a loop and associated marked Distance.
 - Horse trail located near Environmental Park (north side of Creek and meandering for distance)

- Bicycle trail
- Primitive camping area (no restroom facilities) but expansion of the existing facilities at Environmental Park.
- Fishing Area
- Swimming area

Option C is presented in *Figure 4-3*. This option will provide a Myakkahatchee Greenway with the most activities for residents to use on a day to day basis.

These additional features will provide maximum passive and active variations for residents to utilize.

This option will be more costly than either Option A or B to accommodate added capital costs for parkway features such as bike path, paw park, horse trail, and such features.

Fishing and swimming areas were also incorporated. It should be noted that there is alligator habitat and activity within the Myakkahatchee Creek. This particular activity should be carefully considered before developing and supporting associated facilities.



Source: Andrew Kelly
North Port Environmental Specialist

Myakkahatchee Creek: Greenway Concept Plan C



Option C

Figure 4-3

Appendix

*City of North Port
Myakkahatchee Creek Greenway
Concept Plan*



Title

A

Appendix

Acknowledgments

Public Workshop One: Survey Results, Sign-In, & Notes

Public Workshop One: Questionnaire

Janus Research Archaeological Memorandum

Acknowledgements

Acknowledgements

TGW Engineering, Inc. would like to provide acknowledgement to the following supporting participants and resources:

- 🌳 City of North Port Public Works Department - Division of Parks & Recreation
- 🌳 City of North Port Planning & Zoning Department
- 🌳 Mr. Andrew Kelly, North Port Environmental Scientist (Engineering Department) for nature photograph contributions.
- 🌳 Engineering Visions, Inc. for permission to use Copyrighted photos for the cover and report.
- 🌳 URS Corporation
- 🌳 Public and Community Participants

Public Workshop One

Survey Results

Sign-In Form

Meeting Notes



City of North Port Myakkahatchee Creek Greenway Public Workshop 1 Survey Results

On April 18th, 2006, a public workshop was held by TGW Engineering and URS, on behalf of the City of North Port, to receive input regarding the planning of the Myakkahatchee Creek Greenway project. There were approximately 37 people in attendance not including various City and TGW/URS staff. Surveys were distributed to the attendants during the meeting. Persons could either complete the surveys before they left the meeting or later by transmitting the completed forms by mail or Fax. By the end of the meeting, 17 completed surveys were received. The North Port Sun Herald further published the survey on April 21st, 28th, and 29th, 2006. An additional 42 surveys were received after the April 18th meeting through the month of May. A total of 59 surveys have been received from interested parties regarding the Myakkahatchee Creek Greenway project.

The remaining information details the results of the surveys received and recorded. Summary tables and graphs have been included to aid in reviewing the public input and interests.

Question 1 Results:

There were a total of 59 response surveys received. Of the 59 response surveys, 38 respondents completed Question 1 correctly by choosing their preferred *five* activities and *ranking* them from 1 (*most preferred*) to 5 (*preferred*). The remaining 21 respondents selected all 15 activities and ranked them in various manners. To accommodate all the respondents, the results for Question 1 were separated into Group 1 and Group 2. The data was tabulated and graphed in the following manner:

- Group 1: Weighted Points based on 38 responses.
Group 2: Average Values based on 21 responses.

Question 1: From the following list of recreational activities and uses, please choose *five* activities which are important in satisfying your household's recreational needs. Of the *five non-motorized activities* you select, rank your preference where 1 is most preferred and 5 is the least.

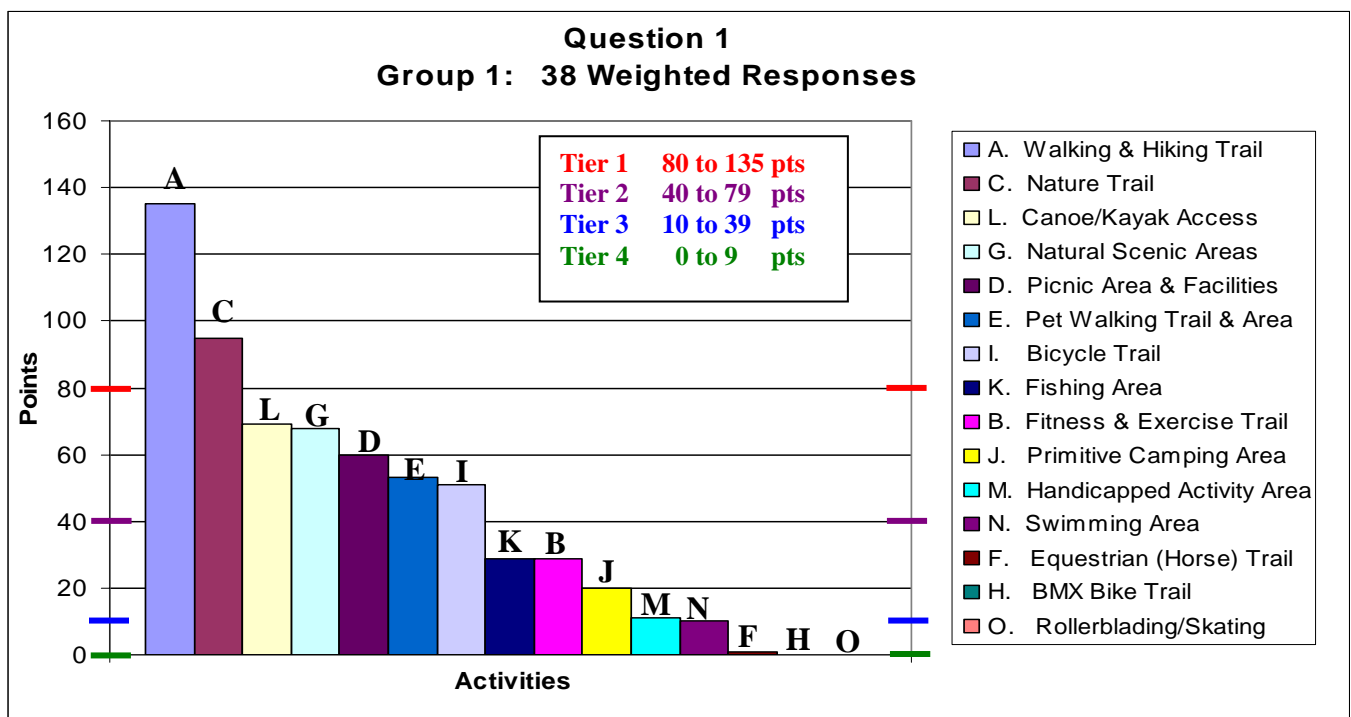
- | | |
|--|-------------------------------------|
| <u>A. Walking & Hiking Trail</u> | <u>I. Bicycle Trail</u> |
| <u>B. Fitness & Exercise Trail</u> | <u>J. Primitive Camping Area</u> |
| <u>C. Nature Trail</u> | <u>K. Fishing Area</u> |
| <u>D. Picnic Area & Facilities</u> | <u>L. Canoe/Kayak Access</u> |
| <u>E. Pet Walking Trail & Area</u> | <u>M. Handicapped Activity Area</u> |
| <u>F. Equestrian (Horse) Trail</u> | <u>N. Swimming Area</u> |
| <u>G. Natural Scenic Areas</u> | <u>O. Rollerblading/Skating</u> |
| <u>H. BMX Bike Trail</u> | |



Group 1 Responses: Point assignment was made to the 1 through 5 rankings, giving higher values to the more favored activities. The assigned points and results are listed below:

Question 1 - Activity Interest Group 1		Respondent's Interest Ranking: #										SUM
Rank		1	2	3	4	5						
Weighted Value		5	4	3	2	1						
A. Walking & Hiking Trail	17	85	5	20	7	21	3	6	3	3	135	
C. Nature Trail	8	40	5	20	9	27	2	4	4	4	95	
L. Canoe/Kayak Access	9	45	3	12	1	3	4	8	1	1	69	
G. Natural Scenic Areas	9	45	1	4	3	9	3	6	4	4	68	
D. Picnic Area & Facilities	4	20	4	16	1	3	7	14	7	7	60	
E. Pet Walking Trail & Area	7	35	3	12	1	3	1	2	1	1	53	
I. Bicycle Trail	5	25	3	12	2	6	2	4	4	4	51	
K. Fishing Area	2	10	3	12	0	0	1	2	5	5	29	
B. Fitness & Exercise Trail	3	15	1	4	0	0	4	8	2	2	29	
J. Primitive Camping Area	2	10	1	4	2	6	0	0	0	0	20	
M. Handicapped Activity Area	0	0	2	8	1	3	0	0	0	0	11	
N. Swimming Area	0	0	1	4	2	6	0	0	0	0	10	
F. Equestrian (Horse) Trail	0	0	0	0	0	0	0	0	1	1	1	
H. BMX Bike Trail	0	0	0	0	0	0	0	0	0	0	0	
O. Rollerblading/Skating	0	0	0	0	0	0	0	0	0	0	0	

The resulting points tabulated from Group 1 are presented graphically in the bar chart below.





The activity preferences of Group 1 were placed in Tiers for review purposes ranging from Tier 1 (most preferred) to Tier 4 based on clustered point spreads within the data results.

Group 1

Tier 1 (80 to 135 points)

- A Walking & Hiking Trail
- C. Nature Trail

Tier 2 (40 to 79 points)

- L. Canoe/Kayak Access
- G. Natural Scenic Areas
- D. Picnic Area & Facilities
- E. Pet Walking Trail & Area 1
- I. Bicycle Trail

Tier 3 (10 to 39 points)

- K. Fishing Area
- B. Fitness & Exercise Trail
- J. Primitive Camping Area
- M. Handicapped Activity Area
- N. Swimming Area

Tier 4 (0 to 9 points)

- F. Equestrian (Horse) Trail
- H. BMX Bike Trail
- O. Rollerblading/Skating

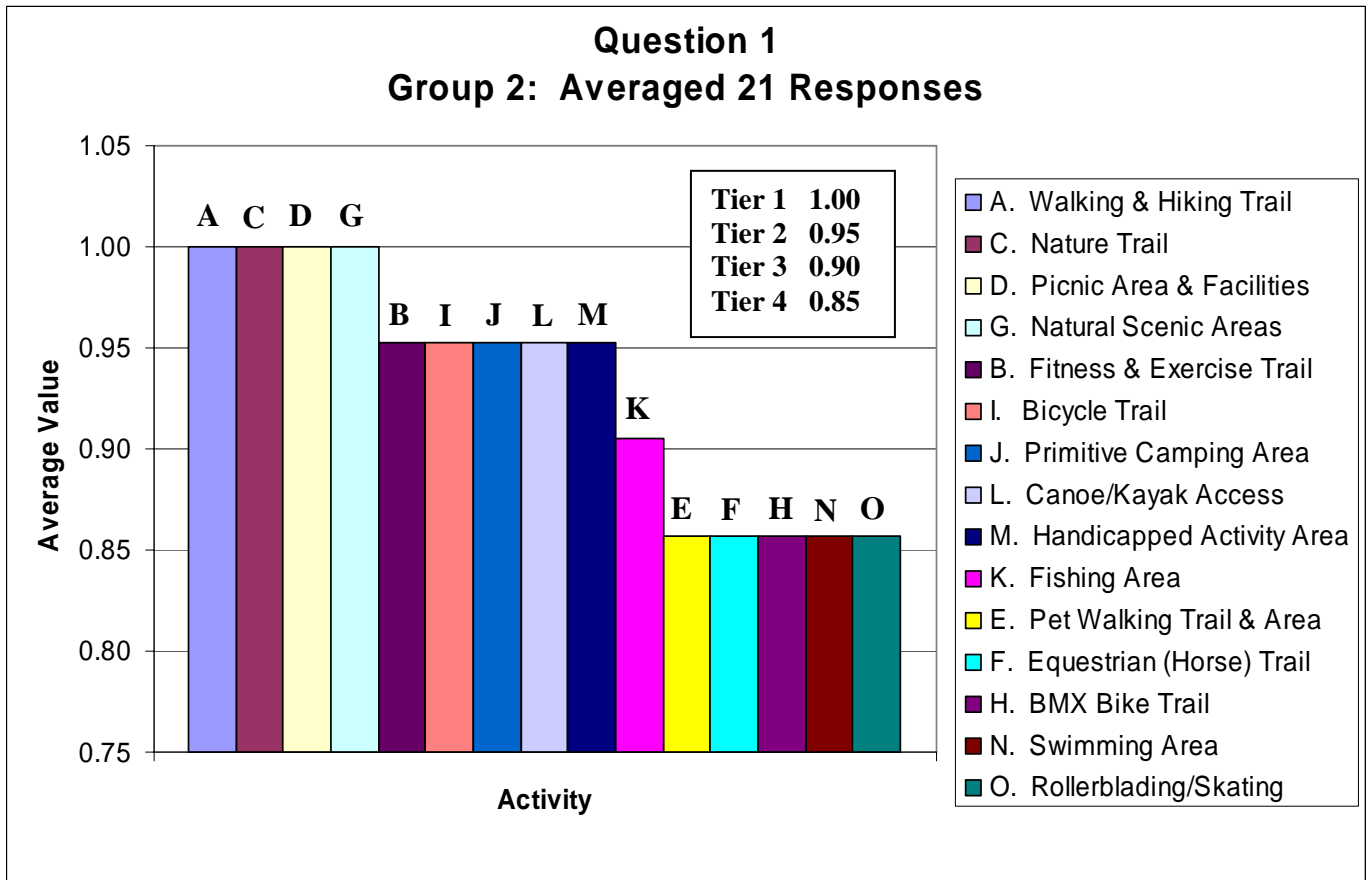
Group 2 is comprised of 21 respondents which selected all the activities and provided some element of ranking. Group 2 results were tabulated by applying an average value to their data.

Group 2 Responses: Summations were completed for each of the 15 activities and averaged for the 21 respondents. The resulting values are listed below.

Question 1 - Activity Interest Group 2		Respondent's Interest Ranking:					
Ranking		1	2	3	4	5	Average
A. Walking & Hiking Trail		16	1	3	1	0	1.00
B. Fitness & Exercise Trail		16	3	2	0	0	1.00
C. Nature Trail		13	2	3	2	1	1.00
D. Picnic Area & Facilities		15	3	1	1	1	1.00
E. Pet Walking Trail & Area		6	3	5	4	2	0.95
F. Equestrian (Horse) Trail		10	1	3	4	2	0.95
G. Natural Scenic Areas		6	2	6	2	4	0.95
H. BMX Bike Trail		11	3	6	0	0	0.95
I. Bicycle Trail		7	5	3	1	4	0.95
J. Primitive Camping Area		8	4	2	2	3	0.90
K. Fishing Area		7	2	1	5	3	0.86
L. Canoe/Kayak Access		4	0	4	2	8	0.86
M. Handicapped Activity Area		3	0	4	1	10	0.86
N. Swimming Area		4	1	4	1	8	0.86
O. Rollerblading/Skating		1	2	2	1	12	0.86



The resulting averages from the 21 responses of Group 2 were presented graphically in the bar chart below.



The activity preferences of Group 2 are placed in Tiers for review purposes ranging from Tier 1 to Tier 4 based on clustered average values within the data results.

Tier 1 (1.00 Average)

- A Walking & Hiking Trail
- C. Nature Trail
- D. Picnic Area & Facilities
- G. Natural Scenic Areas

Tier 3 (0.90 Average)

- K. Fishing Area

Tier 2 (0.95 Average)

- B. Fitness & Exercise Trail
- I. Bicycle Trail
- J. Primitive Camping Area
- L. Canoe/Kayak Access
- M. Handicapped Activity Area

Tier 4 (0.85 Average)

- E. Pet Walking Trail & Area
- F. Equestrian (Horse) Trail
- H. BMX Bike Trail
- N. Swimming Area
- O. Rollerblading/Skating



Although different response approaches and methods of reviewing data were utilized for Group 1 and Group 2, overall results maintained strong similarities. Specifically, Walking, Hiking, and Nature Trail categories maintain a strong preference between the two groups as did Picnic and Natural Scenic Areas.

Question 2 Results:

Respondents were asked to provide additional activities of interest not listed in Question 1. The list below provides the comments received for Question 2.

Question 2: Are there recreational activities and uses not listed in 1. above which you would like to see incorporated in the Greenway project? If so, please list or describe below:

Question #2: Comments	List Additional Activities not listed in Question 1 and other comments.
Survey #6	Would like to see a playground.
Survey #7	Would like a fishing pier.
Survey #10	Basketball hoops, place for small children.
Survey #11	Wants to be informed of future meetings and related information.
Survey #12	Free activities for children.
Survey #13	Before getting this project underway, find out how many people really use the present park.
Survey #15	Signage in nature trail and at scenic areas describing the "flora and fauna" .
Survey #19	Hiking/bicycle trail through Carlton Reserve to Myakka River.
Survey #21	Bird watch.
Survey #24	Showers and toilets in the environmental park.
Survey #25	Restrooms, showers for camping area, pavilion, youth camping fire circle.
Survey #37	Camping facilities (showers/restroom) to be scouting approved.
Survey #49	Is there any way to put permanent games in the picnic area - to make it where you want to have a picnic - like horseshoe pit, volleyball court, bbq, grills, checker/chess tables - and is there a way to have nice bathrooms! Cement slabs with "hop scotch", "tic tac toe" or a "four square" games painted on for people to play on would be great!
Survey #50	ATV trails.
Survey #52	Place for families & kids to go. Keep kids off streets and out of trouble.
Survey #53	Environmental education - canopy platform.
Survey #57	Guided walks, small concession stand, small nature center + lectures/programs.
Survey #59	ADA accessible trails (wheelchairs & scooters).



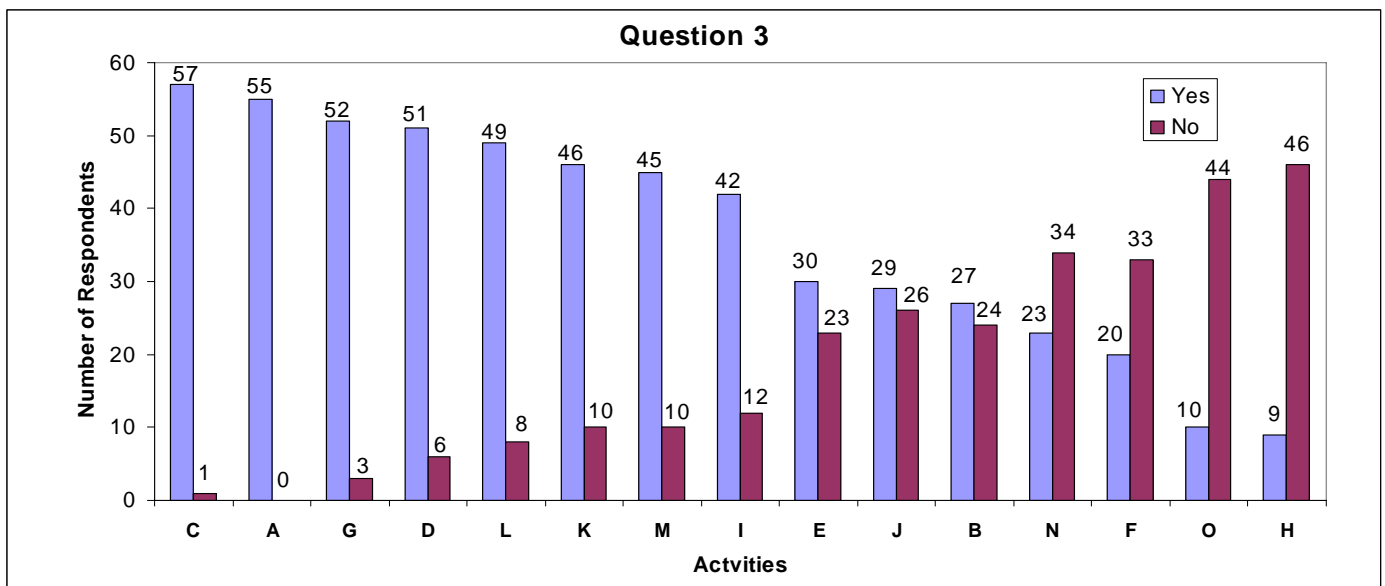
Question 3 Results:

Respondents were asked to provide a Yes or No answer for the project to the listed activities. The list below provides the results received for Question 3.

Question 3: From the following list of recreational activities and uses, please circle Yes or No as to what you would like to see in the Greenway project.

Question #3 - Respondent's Answer per Category		
	Yes	No
C. Nature Trail	57	1
A. Walking & Hiking Trail	55	0
G. Natural Scenic Areas	52	3
D. Picnic Area & Facilities	51	6
L. Canoe/Kayak Access	49	8
K. Fishing Area	46	10
M. Handicapped Activity Area	45	10
I. Bicycle Trail	42	12
E. Pet Walking Trail & Area	30	23
J. Primitive Camping Area	29	26
B. Fitness & Exercise Trail	27	24
N. Swimming Area	23	34
F. Equestrian (Horse) Trail	20	33
O. Rollerblading/Skating	10	44
H. BMX Bike Trail	9	46

The responses have been graphed as a bar chart (below) to provide visual reference to respondent's preferences as to the type of activities for the Myakkahatchee Creek Greenway project.





Question 4 Results:

Respondents were asked to provide additional comments or ideas. The list below provides the comments received for Question 4.

Question 4: Other ideas and comments:

Question #4: Comments	Responses
Survey #5	Please DO NOT put a dirt bike trail in the park - talk about defeating the purpose!
Survey #6	A playground would be nice so families could do trails, play at playground then picnic.
Survey #9	Into nature photography so natural scenic areas and nature trails are important; walking, hiking, bicycle trails and swimming are important - 63 yr. old lives in apt. which backs-up to Myakkahatchee Creek.
Survey #10	We do need a lot of things for US baby boomers! A children's park, water and wild life - scenic areas.
Survey #11	Thank you for requesting our feedback! Look forward to a nice place to enjoy with our family and friends
Survey #13	How come there seems to be plenty of money for extras like this but not for necessities? It's very disturbing. I wonder WHO benefits the most from these suggestions?
Survey #15	Camping and swimming are "noisier" type activities which could take away from the peaceful atmosphere and disturb the wildlife more.
Survey #17	I would like to have benches at the scenic areas. Thank you. I really appreciate your efforts.
Survey #21	Concession on weekends, guided tours, hours posted
Survey #24	Security to protect the greenway. Our major concern at this time is a lack of routine police patrols in Myakkahatchee Park to curtail reckless public intoxication and irresponsible behavior that can start a serious fire.
Survey #25	Security is a main importance
Survey #26	Connect to Carlton Reserve
Survey #28	For the picnic area and facilities, you should have them but not big ones as the animals need to have all their space of the natural habitat.
Survey #32	Maintenance and enforcement of ordinances, regulations, etc. should be include in the plan. Enforcement should be specific to the Greenway, not just standard police patrol.
Survey #34	As few paved areas as possible! The majority of the creek should be maintained.
Survey #41	We are beyond due to have a pet area for North Port!
Survey #47	Fortify park perimeter fencing to keep ATV riders out! Park south of Tropicaire Blvd. is a defacto ATV park!
Survey #52	Build a BMX track
Survey #53	What about a small domed stage where local bands and other performers can entertain residents?
Survey #57	Boat tours, boardwalks (land dependent), Florida friendly garden area, playground, benches along trail.



**CITY OF NORTH PORT
PARKS & RECREATION DEPARTMENT
AND
PLANNING & ZONING DEPARTMENT**



****CITIZEN WORKSHOP**
MYAKKAHATCHEE CREEK GREENWAY PROJECT**

Meeting Attendance / Guest Register

DATE: April 18, 2006

TIME: 6:00 p.m.

PLACE: COMMITTEE MEETING & TRAINING ROOM

NAME	PHONE NUMBER (941 Area Code)
Robert Dunbar	<i>Intentionally Blocked</i>
Dave Schneider	
Keith Kirschnick	
Chuck Barber	
Ben Barber	
Ken Evangelisti	
Chuck English	
Tom McGhee	
Jim Glass	
Dick Culligan	
Ann Marie Porsico	
Linda Massey	
Deborah Bedwell	
Brandon Bedwell	
Stan Hibbins	
Ahbeste Behinfante	
Nick Farr	
Chris Farr	
Les Farr	
Mitchell Brieschlie	
Sears	
Thomas Jones	
Trevor Kappel	
Sherry Kappel	
G. Amber	
Ryan Brieschlie	
William Leonard	
Betsi Leonard	
Roxanne Williamson	
Daneial Greenwell	
Alice White	
Michael Norton	
Jackie Curtsinger	
Mimi Steger	
Shelly Gardner	
Rick Stonsbera	
Debbie Blanco	





MYAKKAHATCHEE GREENWAY PROJECT COMMENTS

Public Work Shop #1 - 4/18/06

(Notes compiled by TGW Engineering)



1. Chuck English – [REDACTED] (cell)

If anyone wants to be given a tour of the creek area, please let Chuck know – he is quite familiar with the Creek.

- a) Did we conduct “plant survey”?
- b) Flood area near I-75.
- c) Note: Tract C NE border wetland purchase, would be great area for regional bike park.
- d) He fully supports the Greenway park.
- e) Needs to have a Ranger presence for security.

2. Alice White

- a) What is the status of Public Land Ownership? Specifically in question is the area regarding Hole 5 around the Golf Course. This area was ‘supposedly’ a conservation easement area yet they can not access the area.
- b) What was our information based on in showing conservation areas on the map?

3. Margaret Criser

- a) Did we observe ‘No Trespass’ signs near Hole 5 of the Golf course when we walked the Creek area?
- b) What will be the extent of greenway corridor?
- c) What levels of Fertilization pollution from the golf course is occurring in Myakkahatchee Creek and how is it impacting the aquatic life and ecosystem.

4. No Name Given. Would like to see other Environmental Park Access.

5. No Name Given. There is a serious problem with Safety Issues and vandalism currently at the City’s park. What safety plans are being made for this park?

6. No Name Given. User Group Boy Scouts comments:

- a) Would like to see new camping facility, picnic, tables, toilets, showers.
- b) There needs to be a Safety Plan. There are serious and continuing problems with vandalism, burned benches, security, and unauthorized access/use.
- c) Would like to see open space activities.

7. Needs to be a way in Securing the park and limiting certain types of use...like alcohol.



8. Chuck Barber – works with the boy scouts. We need to address the following things:
 - a) Protect greenway/water.
 - b) In the City’s Environmental Park, there have been serious and unresolved issues with the following:
 - a. Lack of police control
 - b. Curbing intoxication
 - c. Security of people
 - d. Vandalism
 - e. Uncontrolled fire activity
 - f. Careening cars breaking down the gates and wildly driving through the grounds.
 - g. Broken glass/trash
 - c) Public health and safety.
 - d) Fear of uncontrolled fire.
 - e) Need of Security presence.
 - f) Have had No response from police.
9. Daneial Greenwall
 - a) Police have given no response at park when called about security issues.
 - b) What is the Schedule in completing this project?
10. No Name Provided. What is the timeline for the Master Plan completion?
11. Keith Kirschnick
 - a) What are the Costs of the Greenway and what does it incorporate?
 - b) There needs to be a Variety of elements in the Park.
12. Brandon Bedwell
 - a) There is no police patrol. Issues police were called on and police did not respond or did nothing about the issue...incident involving an intoxicated individual driving a car in the park and police issued a warning and did not arrest.
 - b) Police are not addressing *Security* issues.
13. Jackie Curtsinger
 - a) What will be the Greenway extent and will there be an access crossing Appomattox Drive.
14. Alice White
 - a) Extension not in plan.



15. Mick Lockhart

- a) North Port Blvd. – public land to price.
- b) At Heron Creek there is a construction road where that road has ownership is to the City.

16. Chuck English

- a) Old way in the past, unspoken rule people followed for many years was ATV to the West and bicycles stayed on the east.
- b) Appomattox Drive to environmental park both sides of creek.
- c) Hole 5 interrupts the path access of the Creek.

17. Debbie Blanco

- a) Watershed protection.
- b) Environmental/ownership protection.
- c) Restoration efforts.
- d) Debris, erosion issues which should be addressed.

18. No Name. Concern over the Golf Course Issues located at Hole 5.

19. Chuck English

- a) Known of these items are new issues.
- b) SWFWMD plan – take out roads – never came to realization.
- c) Pollution impact from golf course.
- d) Exotic species.
- e) Should consider coordinated efforts with Sarasota County.

20. Ken Evangelisti

- a) Connection to Carlton would be great.

21. Added after the meeting.....TGW/URS Implement a Clean-up project similar to the adopt-a-road programs. Perhaps label it 'Adopt My Creek'.

Public Workshop One

Questionnaire Form



City of North Port Myakkahatchee Creek Greenway Project

Community Input Questionnaire 1

The City of North Port is in the planning stages of the Myakkahatchee Creek Greenway project. A greenway is a corridor of open space which is dedicated to public access and may have a variety of functions. These functions may incorporate non-motorized activities such as walking paths, bicycling, and canoeing. The City's project entails the planning and development of a Greenway corridor along the Myakkahatchee Creek boundaries located within the City of North Port. The intent of the Greenway is to protect natural, cultural, scenic, and water resources, while providing recreational benefits to our community.

We wish to receive input from our residents and interested parties as to the 'best' functions for our Greenway. Please assist our planning and design efforts by providing responses to our questionnaire and sharing your ideas and personal preferences for the City's Myakkahatchee Creek Greenway project. **Thank you and we look forward to your input!**

Please place completed Questionnaire 1 in the survey box provided in the workshop meeting or mail/fax to the following:

TGW Engineering
Attn: Sherry DiGiorgio
909 Tamiami Trail South, Suite 210
Osprey, FL 34275

Fax: (941) 412-9273

If you would like to stay informed of future meetings and related information, please provide your name, address and contact information in the space provided below.

Name: _____

Address: _____

City, State: _____

Zip Code: _____

1. From the following list of recreational activities and uses, please choose **five** activities which are important in satisfying your household's recreational needs.

Of the *five non-motorized activities you select*, **rank** your preference where *1 is most preferred* and *5 is the least*.

A. Walking & Hiking Trail	1	2	3	4	5
B. Fitness & Exercise Trail	1	2	3	4	5
C. Nature Trail	1	2	3	4	5
D. Picnic Area & Facilities	1	2	3	4	5
E. Pet Walking Trail & Area	1	2	3	4	5
F. Equestrian (Horse) Trail	1	2	3	4	5
G. Natural Scenic Areas	1	2	3	4	5
H. BMX Bike Trail	1	2	3	4	5
I. Bicycle Trail	1	2	3	4	5
J. Primitive Camping Area	1	2	3	4	5
K. Fishing Area	1	2	3	4	5
L. Canoe/Kayak Access	1	2	3	4	5
M. Handicapped Activity Area	1	2	3	4	5
N. Swimming Area	1	2	3	4	5

2. Are there recreational activities and uses *not* listed in 1. above which you would like to see incorporated in the Greenway project? If so, please list or describe below:

3. From the following list of recreational activities and uses, please choose circle *Yes* or *No* as to what you would like to see in the Greenway project.

A. Walking & Hiking Trail	Yes	No
B. Fitness & Exercise Trail	Yes	No
C. Nature Trail	Yes	No
D. Picnic Area & Facilities	Yes	No
E. Pet Walking Trail & Area	Yes	No
F. Equestrian (Horse) Trail	Yes	No
G. Natural Scenic Areas	Yes	No
H. BMX Bike Trail	Yes	No
I. Bicycle Trail	Yes	No
J. Primitive Camping Area	Yes	No
K. Fishing Area	Yes	No
L. Canoe/Kayak Access	Yes	No
M. Handicapped Activity Area	Yes	No
N. Swimming Area	Yes	No

4. Other ideas and comments: _____

Janus Research

Archaeological Memorandum

MEMO

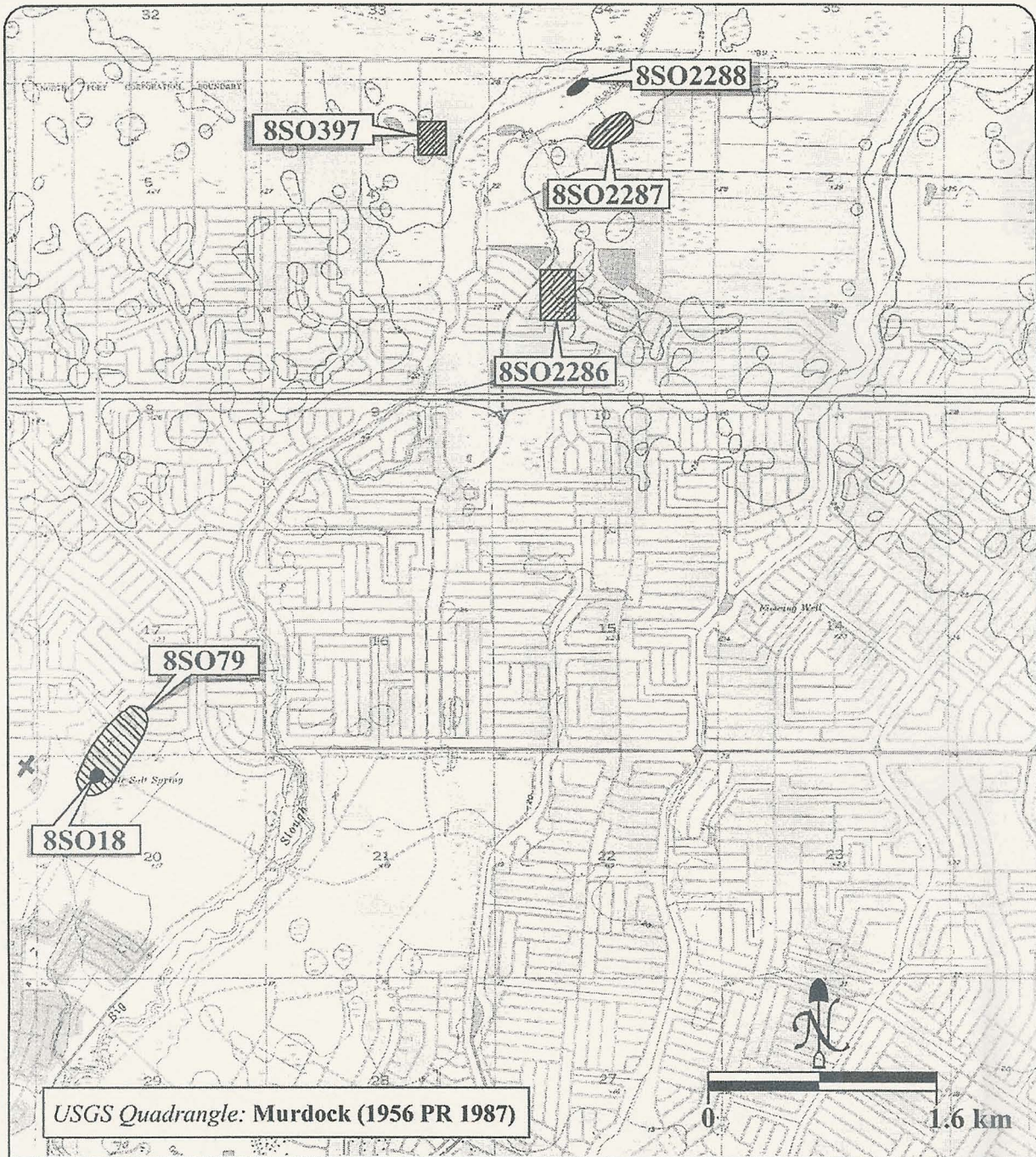
To: Tom Walker
From: Kate Hoffman
Date: November 18, 2005

RE: Myakkahatchee Creek Greenway Master and Management Plan Reconnaissance Survey

Janus Research conducted a reconnaissance survey of the Myakkahatchee Creek Greenway corridor in Sarasota County, Florida, on October 27, 2005. The purpose of the reconnaissance was to conduct the preliminary field review of the Myakkahatchee Creek Greenway corridor and gather baseline data. The Myakkahatchee Creek Greenway is located in Sections 3, 4, 8, 9, 16, 17, 20, 21, and 29 of Township 39 South, Range 21 East on the Murdock USGS Quadrangle (1956 PR 1970) and Section 34 of Township 38 South, Range 21 East on the Murdock NW USGS Quadrangle (1956 PR 1972). It is bounded on the south by S.R. 41 in the town of North Port and on the north by Estates Drive.

An archaeological literature review and background information search pertinent to the project corridor was conducted to determine the potential for archaeological resources. This research included a search of the Florida Master Site File (FMSF), county and local site inventories, books and journal articles, and unpublished cultural resource management (CRM) reports. A search of the Florida Master Site File (FMSF) revealed six previously recorded archaeological sites in close proximity to the corridor: 8SO18, 8SO79, 8SO397, 8SO2286, 8SO2287, and 8SO2288 (Figure 1). Site 8SO18 (Little Salt Springs) is an inundated burial site listed on the National Register of Historic Places (NRHP). 8SO79 is a midden associated with 8SO18. Sites 8SO397 (Myakkahatchee Site), 8SO2286 (Lake Myakkahatchee/ Sumter Boulevard Site), 8SO2287 (C-3 Site), and 8SO2288 (C-8 Site) have not been evaluated for inclusion to the *National Register of Historic Places (NRHP)*.

The physical environment of the corridor includes wetlands with upland associations. The Pomello Fine Sand deposits would have provided dry locations for cultural activities throughout most of the year. The wetlands would have provided aquatic resources for low energy extraction. Freshwater would have been easily obtained from nearby sinkholes and streams. There are several areas along the corridor that provide an environment conducive to archaeological resources. The favorable environmental conditions and presence of previously recorded archaeological sites indicate a high probability for unrecorded archaeological resources in portions of the corridor alignment.



Previously Recorded Archaeological Sites

